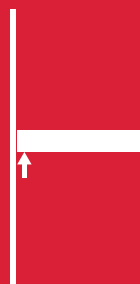


Triade

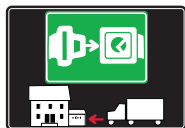


WOOD AND
GLASS
SHELVING
SYSTEMS



SYMBOLS AND FINISHES LEGEND

SYMBOLS



= SHELF SAFELY LOCKED DURING
TRANSPORTATION AND AT HOME.



= ANTI-TURNOVER LOCKING SYSTEM



= NORMS / PATENTS



= PHILLIPS / POZIDRIV



= NEWTON



= PART.NO



= HEXAGONAL SOCKET



= FRICTION



= PCS. PER PACKAGE



= BLADE SLOT



= AUTOMATIC



= COMBI SLOT



= DROP DOWN



= CAPACITY LOADING



= COUNTERSUNK HEAD



= WOOD / GLASS
THICKNESS



= PAN HEAD



= STANDARD HINGE



= HOLE DIAMETER



= FLANGE HEAD



= KIMANA HINGE



= DIAMETER



= FLAT HEAD



= FLAP HINGE



= LENGTH



= TRILOBULAR SCREW



= WITH SPRING



= HEIGHT



= SELF-TAPPING SCREW



= WITHOUT SPRING



= RIGHT VERSION



= EURO THREAD



= REVERSED SPRING



= LEFT VERSION



= METRIC THREAD



= SETTING CODE



= PRE-INSERTED SCREW



= FOR ROUND TUBE



= PCS. PER PAD



= PRE-INSERTED SCREW
AND SPREADING BUSH



= FOR OVAL TUBE



= CUT ON REQUEST



= WITH BUFFER



= SELF ADHESIVE



= WITH MAGNET



= WITH FLANGE

NOTE: Printing errors and omissions may exist despite our best efforts to ensure accuracy. We reserve the right to alter specifications without notice.

MATERIALS

ZA = Zinc Alloy	ST = Steel	HSS = High Speed Steel	BR = Brass	ABS = Acrylonitrile Butadiene Styrene
ZAnk = Nickel-plated Zinc Alloy	STzk = Zinc-plated Steel	AL = Aluminium	WD = Wood	EVA = Ethylene Vinyl Acetate

EP = ENGINEERING PLASTIC	+ EP = other engineering plastic available on request	SR = SOFT RUBBER	+ SR = other soft rubber available on request
--	--	--------------------------------	--

EPn = Natural Engineering Plastic	EPc = Clear Engineering Plastic	SRn = Natural Soft Rubber
EPw = White Engineering Plastic	EPg = Grey Engineering Plastic	SRw = White Soft Rubber
EPwg = Water Green Engineering Plastic		SRb = Black Soft Rubber



FINISHES



= OTHER FINISHES AVAILABLE ON REQUEST

PART. NO	FINISHES	PART. NO	FINISHES	PART. NO	FINISHES
AA	Natural	IJ	Light Grey	RO	Red
AB	White	IL	Grey 20	PZ	Beech
AC	Opal White	IN	Grey met. 26	QB	Walnut
AE	White 9010	JB	Bright Aluminium	QA	Maple
AK	Champagne	JC	Aluminium - Chrome	UT	T-Met 9007
AL	Ivory	JD	Matt Aluminium	UZ	T-Met
EA	Black	JE	Satin-finished Aluminium	WA	Bronzed
EB	Glossy Black	JF	Aluminium - Brass	WI	Burnished
EC	Matt Black	JG	Aluminium 5	XD	Satin-finished Steel
EE	Anthracite	JL	Aluminium PE 11	YA	Nickel-plated
EW	Grey 9007	JM	Aluminium RAL 9006	YB	Bright Nickel-plated
FU	Gunmetal	KA	Chrome	YC	Matt Nickel-plated
FV	Gunmetal V52	KB	Bright Chrome	YD	Satin-finished Nickel-plated
GR	Raw	KC	Matt Chrome	YQ	Black Nickel
HA	Brass-Plated	MA	Brown	Z9	Black Zinc
HH	Tropicalized	MB	Light Brown 1	ZA	Zinc alloy
HL	Raw Brass	NN	Metallic Beige	ZN	Zinc-plated
HX	Graphite	NO	Beige	ZQ	Bright Gold
IA	Grey	OA	Oak	ZY	Titanium
IB	Metallic Grey	OZ	Ash	ZZ	Clear
IF	Middle Grey	PA	Light Ash	00	Insignificant finish

TRIADE

TRIADE is the concealed mounting bracket for shelves 25 to 40mm thick. It has been conceived to simplify the shelf installation. It is provided with three independent adjustments:

1) VERTICAL

Before installing the shelf, the mounting brackets can be adjusted in height and (vertically) aligned through the slots.

2) HORIZONTAL

While placing the shelf in position, the supporting pins can be slid horizontally.

3) INCLINATION

When the shelf is partially inserted, the shelf angle can be adjusted front to back by turning the supporting pins with a 10mm open-ended wrench.

The capacity loading is 15Kg each (shelf weight included) for a shelf max 300mm deep.

Shelf minimum depth: 160mm

Zinc alloy and steel

30-40 mm



15 kg for each shelf support
for shelf 300 mm deep

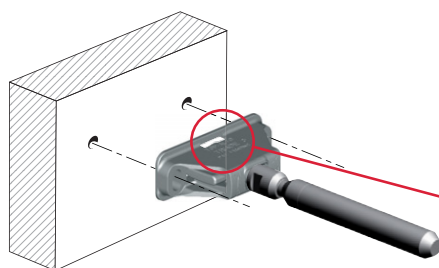


PAT. PENDING



INSTALLATION AND ADJUSTMENTS

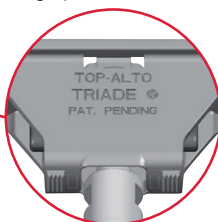
WOOD PANEL



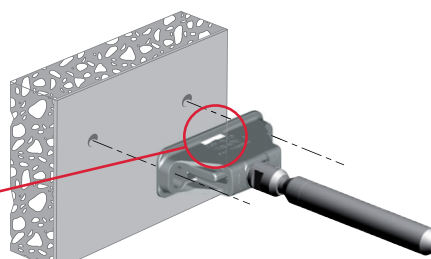
Recommended fixing pan head screw type - head Ø 5 mm max.

VERY IMPORTANT

Triade has to be installed with the writing "TOP - ALTO" facing upwards.



SOLID AND PLASTERBOARD PANEL

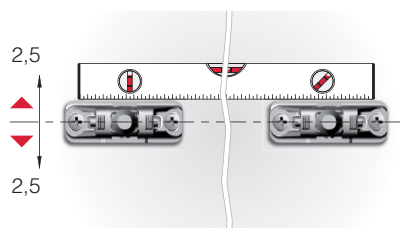


It is the responsibility of the customer:

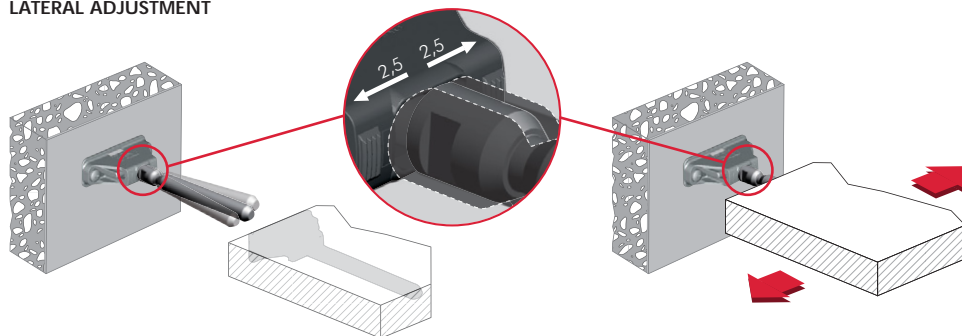
- to ensure the wall is of a suitable quality to hold the shelf fixing in place.
- to use the proper hardware fittings according to the construction of the wall.

For more specific information, please refer to the WARNINGS section at the end of the catalogue.

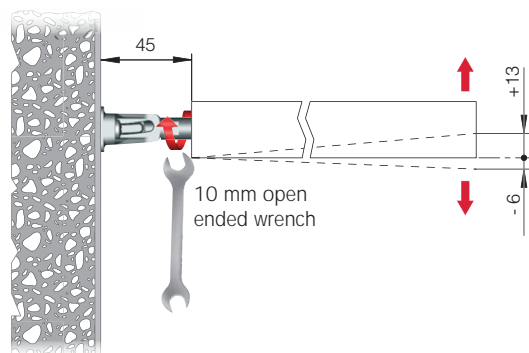
BRACKET ALIGNMENT



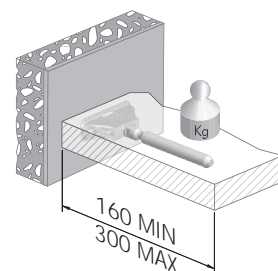
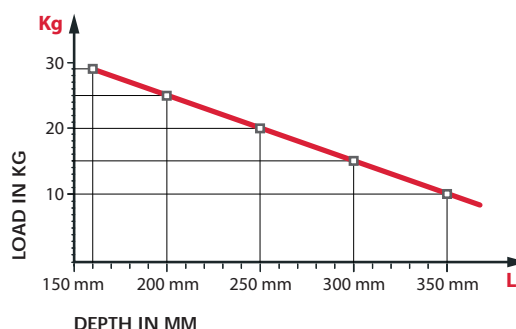
LATERAL ADJUSTMENT



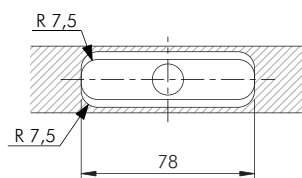
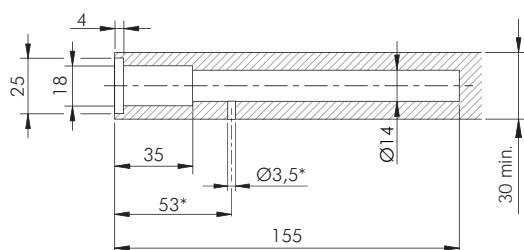
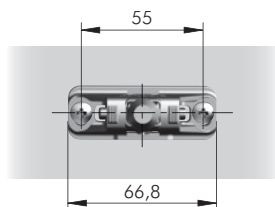
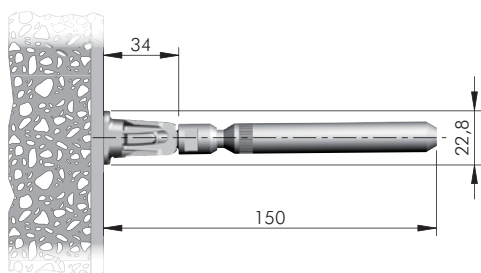
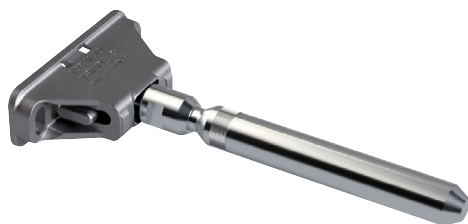
INCLINATION ADJUSTMENT



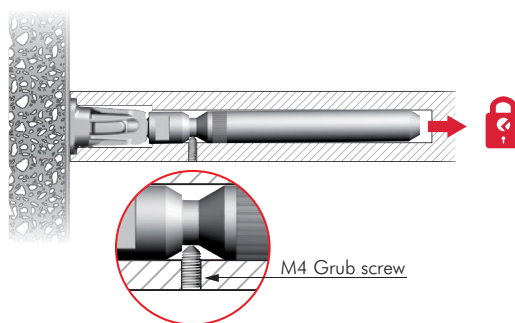
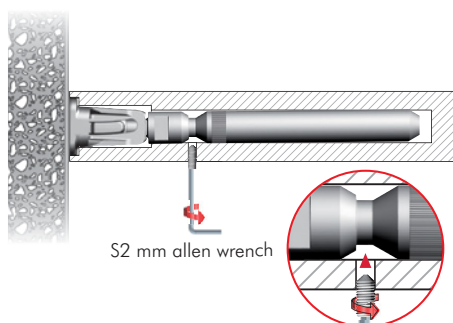
COMBINATION SHELF LOAD AND SHELF DEPTH (The figures refer to 1 shelf support)



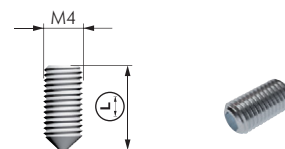
+ shelf weight = 15 kg
MAX for each shelf support



* Optional drilling for security locking with M4 grub screw placed underneath in alignment with the cavity.

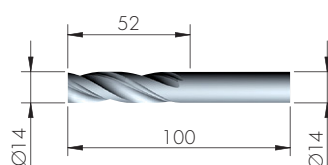
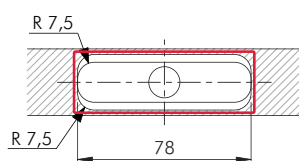
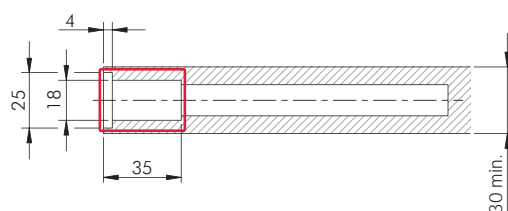
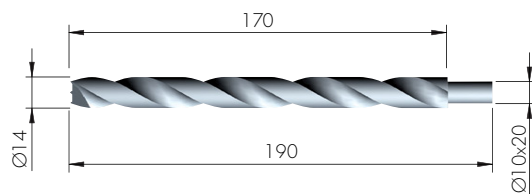
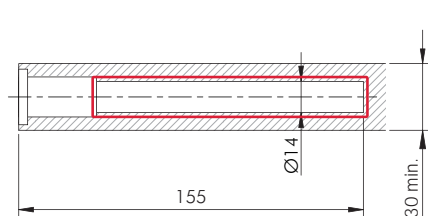


= PZ2
 = open ended wrench 10 mm
 = 50 pcs.
 123
1621501000



= S2 mm
 = 100 pcs.
 123
21105180ZN 10 30
21105220ZN 16 40

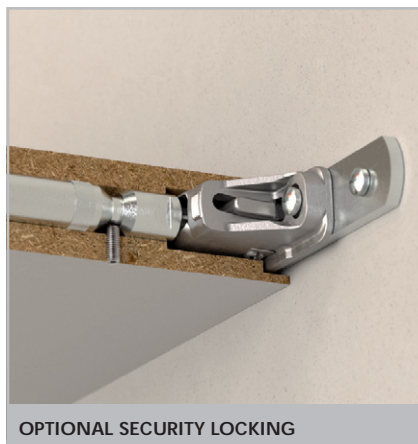
DRILL BIT FOR TRIADE



= on request
 123
1621452000

= on request
 123
1621454000

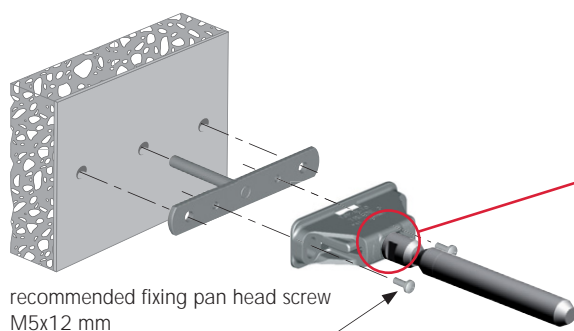
TRIADE AND BRACKET



OPTIONAL SECURITY LOCKING

INSTALLATION

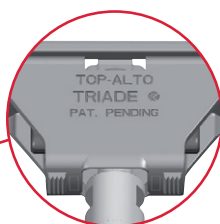
SOLID AND PLASTERBOARD PANEL



recommended fixing pan head screw
M5x12 mm

VERY IMPORTANT

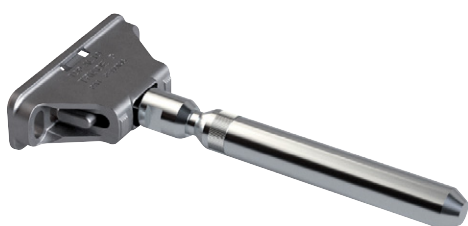
Triade has to be installed with the writing "TOP - ALTO" facing upwards.



It is the responsibility of the customer:

- to ensure the wall is of a suitable quality to hold the shelf fixing in place.
- to use the proper hardware fittings according to the construction of the wall.

For more specific information, please refer to the WARNINGS section at the end of the catalogue.



= PZ2



= open ended
wrench 10 mm



= 50 pcs.



1621501000



= M5

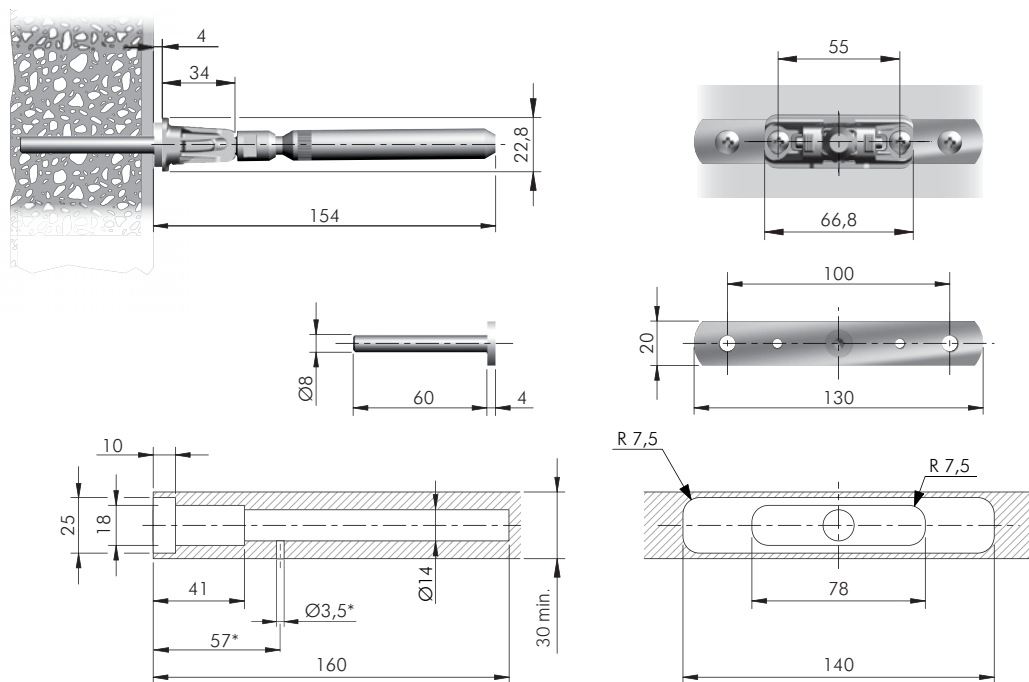


= 100 pcs.



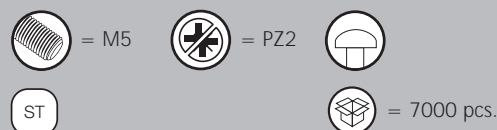
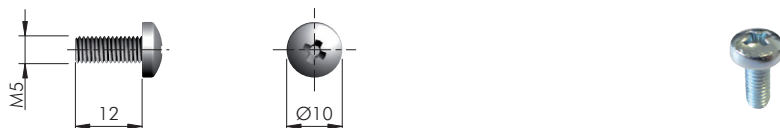
16215020ZN





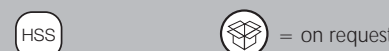
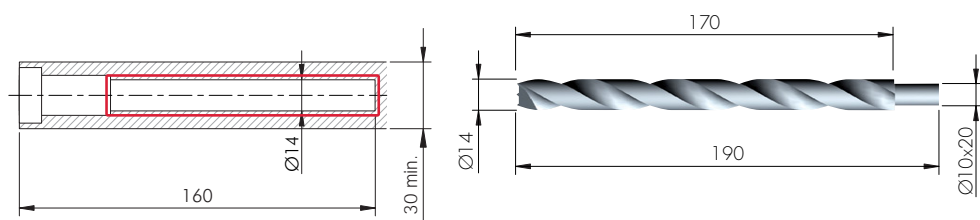
* Optional drilling for security locking with M4 grub screw placed underneath in alignment with the cavity. For details refer to Triade section.

TRIADE BRACKET FIXING ACCESSORY

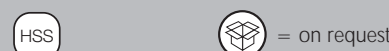
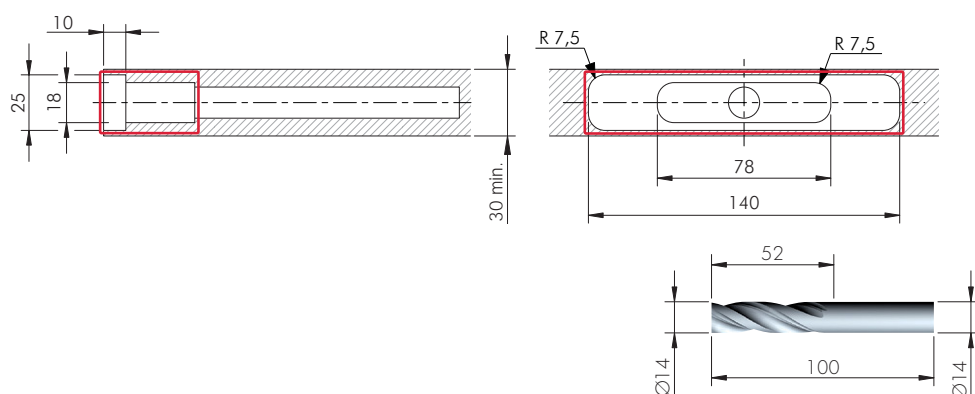


123
60334030ZN

DRILL BIT FOR TRIADE AND BRACKET



123
1621452000

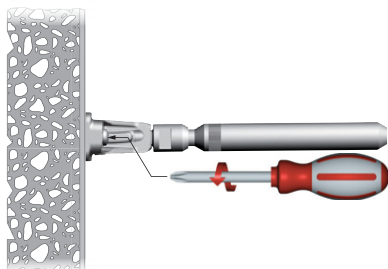


123
1621454000

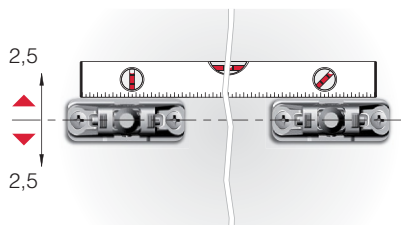
APPLICATION FOR ALL TRIADE VERSIONS

VERTICAL ADJUSTMENTS

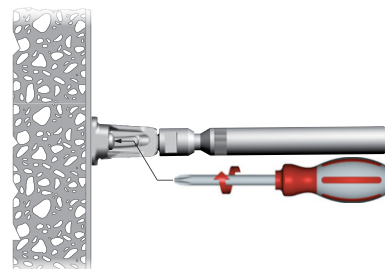
RELEASE THE FIXING SCREWS



ALIGN BRACKETS VERTICALLY ACCORDINGLY

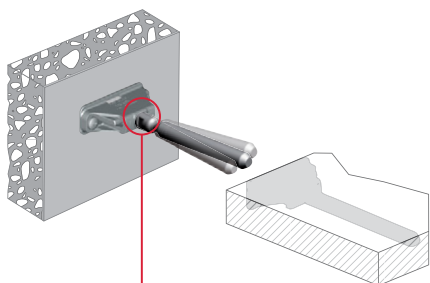


TIGHT THE FIXING SCREWS

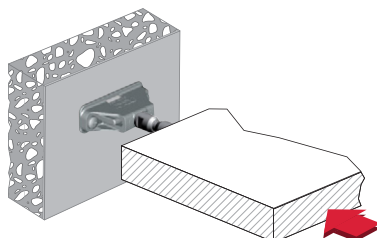


SHELF INSERTING AND LATERAL ADJUSTMENT

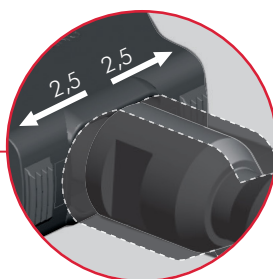
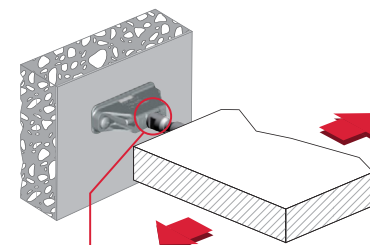
TILT THE SHELF TO MATCH BOTH SUPPORTING PINS AND SHELF HOUSINGS



INSERT PARTIALLY THE SHELF

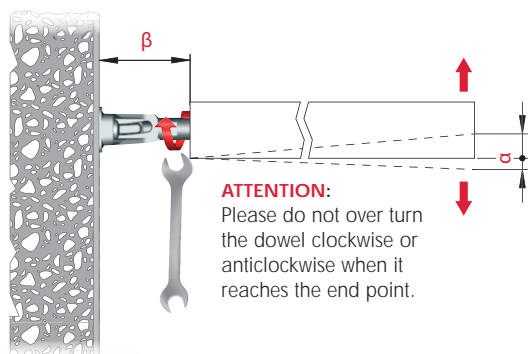


ADJUST THE SHELF LATERALLY ACCORDING TO THE APPLICATION (i.e. MULTI-SHELF COMPOSITION)



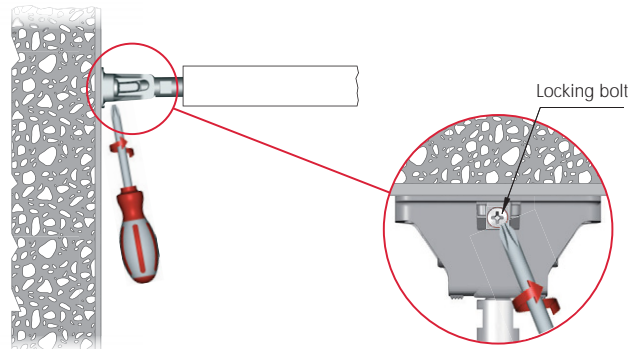
INCLINATION ADJUSTMENTS

TURN CLOCKWISE THE SUPPORTING PIN WITH A 10 - 12 mm OPEN-ENDED WRENCH TO ADJUST THE SHELF ANGLE FRONT TO BACK ACCORDINGLY



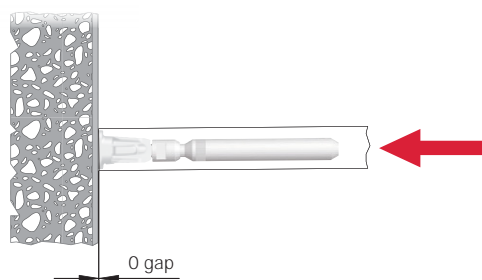
MODEL	β (mm)	α (mm)
TRIADE MINI	approx. 45	-6 +13
TRIADE	approx. 45	-6 +13
TRIADE MAXI	approx. 70	-8 +20
TRIADE XXL	approx. 70	-8 +20

SCREW THE LOCKING BOLT TO BLOCK THE PIN



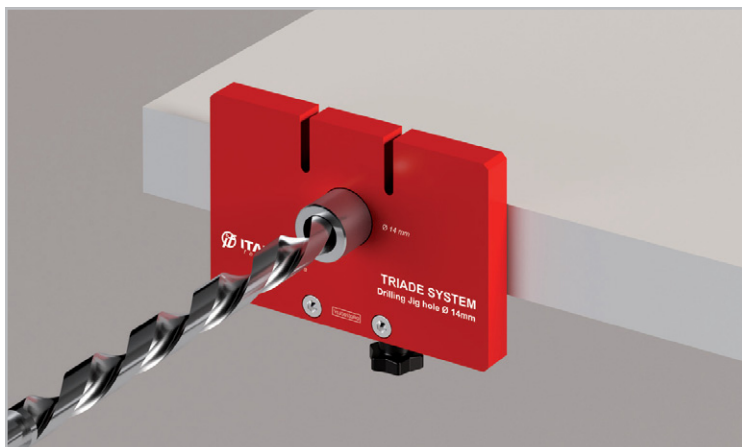
SHELF INSERTING FOR ALL TRIADE MODELS

PUSH THE SHELF AGAINST THE WALL UNTIL THE END





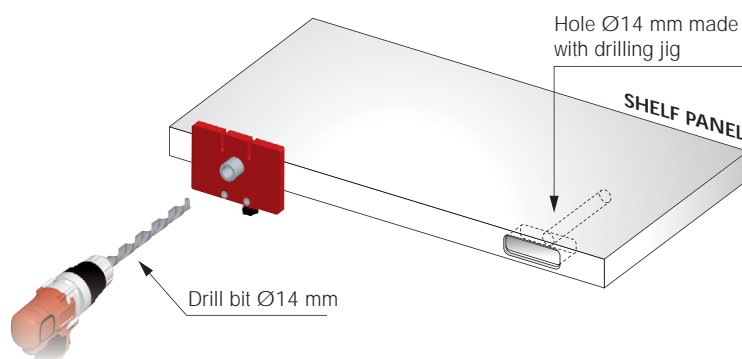
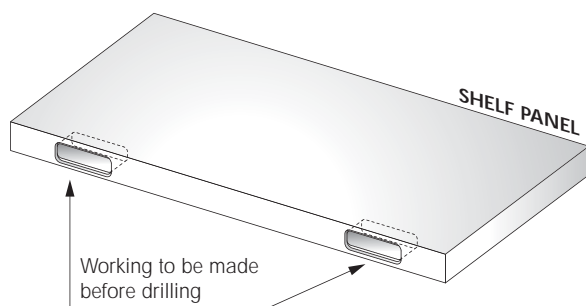
DRILLING JIG FOR TRIADE



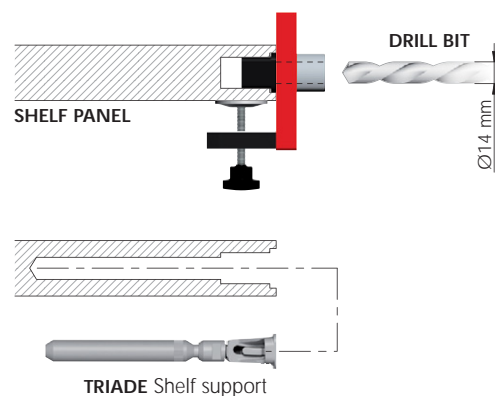
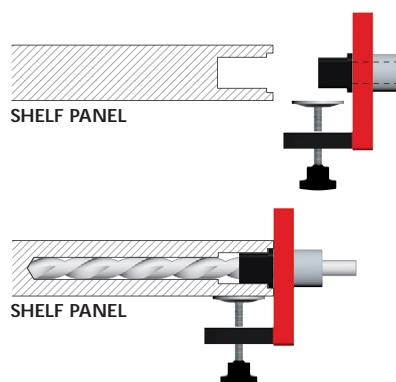
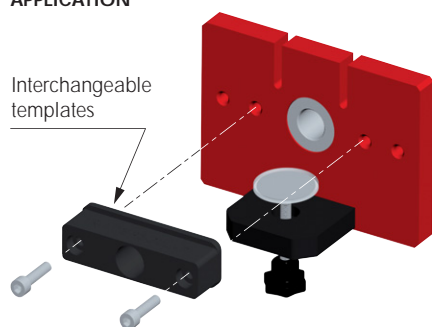
50 mm MAX



GENERAL SPECIFICATIONS



APPLICATION



TEMPLATES AVAILABLE

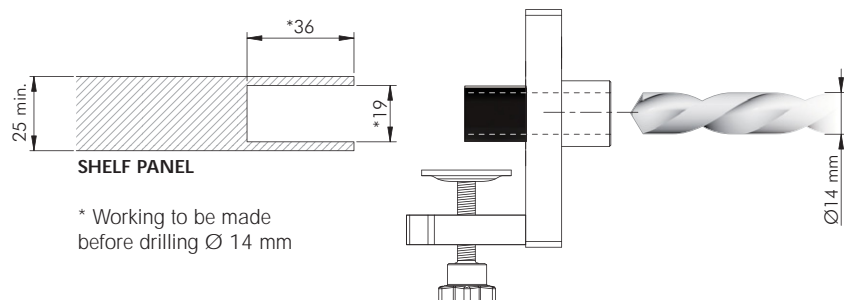
TEMPLATE FOR TRIADE MINI Part no. Y0JG013500	TEMPLATE FOR TRIADE Part no. Y0JG013600	TEMPLATE FOR TRIADE MAXI Part no. Y0JG013700	TEMPLATE FOR TRIADE MINI Part no. Y0JG013800	TEMPLATE FOR TRIADE MAXI Part no. Y0JG013900
Triade Mini Triade Mini and Bracket	Triade Triade and Bracket	Triade Maxi Triade Maxi and Bracket	Aluminium profile for Triade Mini and Triade Triade Mini Triade	Aluminium profile for Triade Maxi Triade Maxi

TRIADE DRILLING JIG

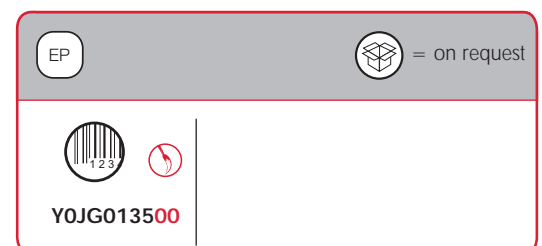
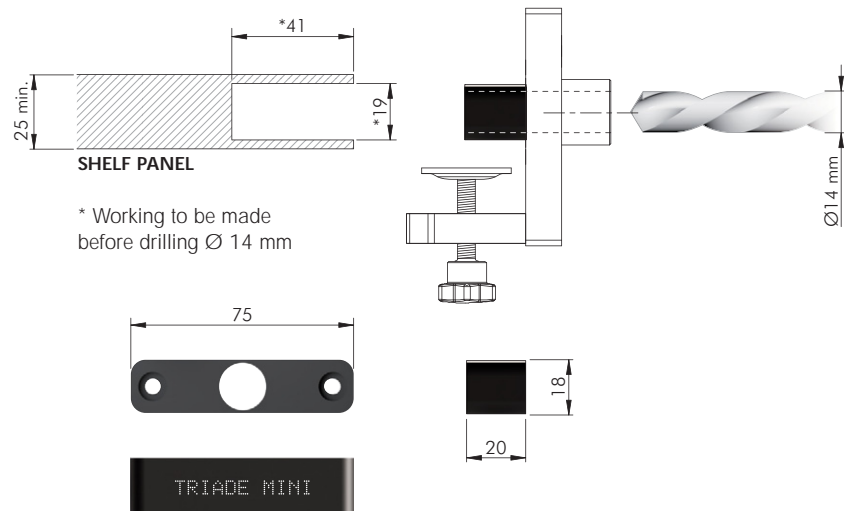


TRIADE DRILLING JIG TEMPLATES

TRIADE MINI DRILLING PLAN



TRIADE MINI AND BRACKET DRILLING PLAN

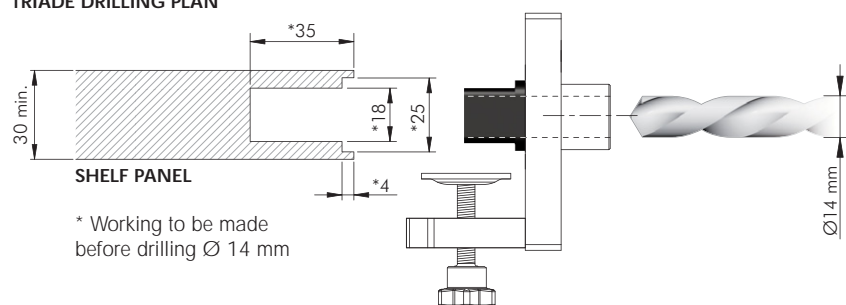


NOTE: The product code includes the fixing screws.

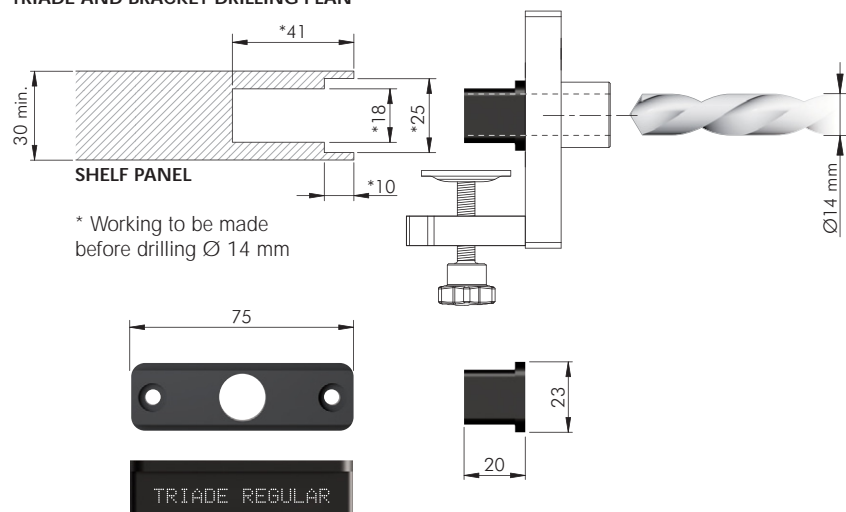




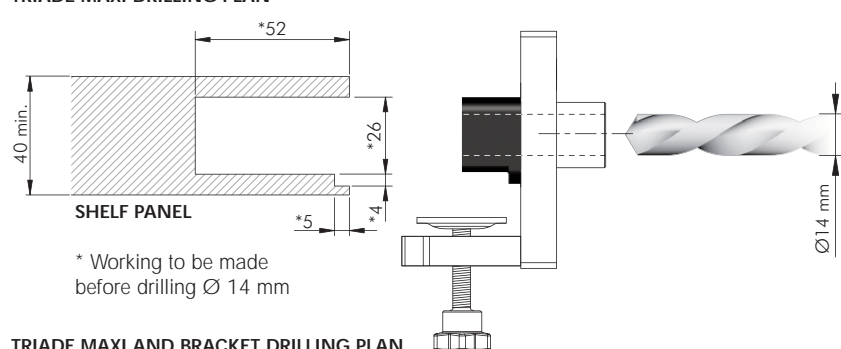
TRIADE DRILLING PLAN



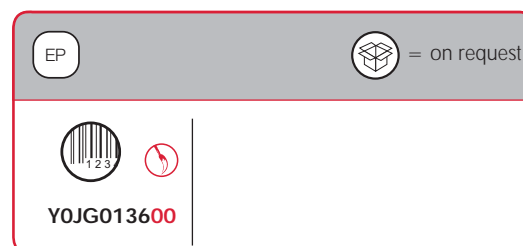
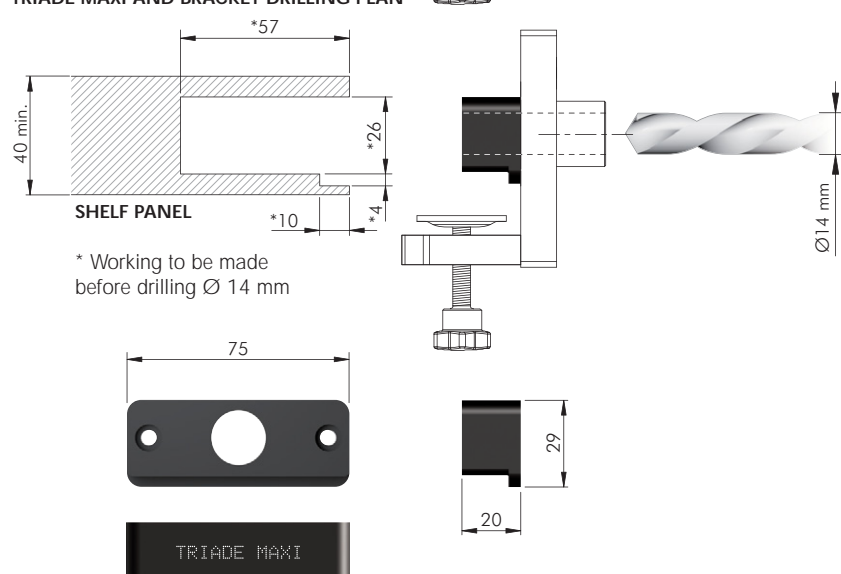
TRIADE AND BRACKET DRILLING PLAN



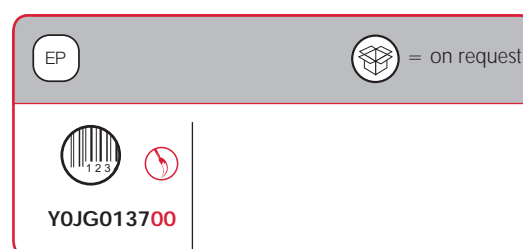
TRIADE MAXI DRILLING PLAN



TRIADE MAXI AND BRACKET DRILLING PLAN



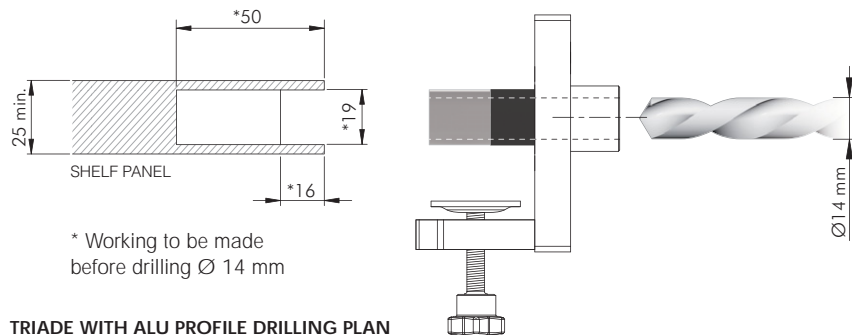
NOTE: The product code includes the fixing screws.



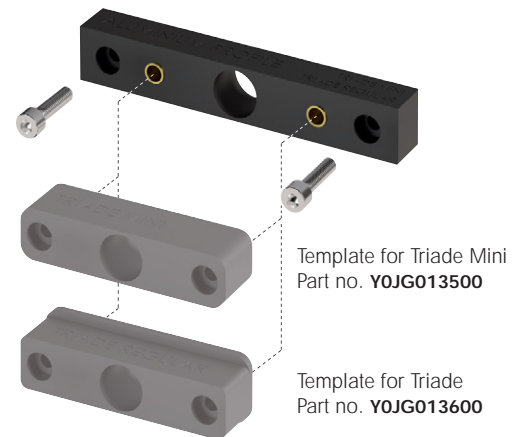
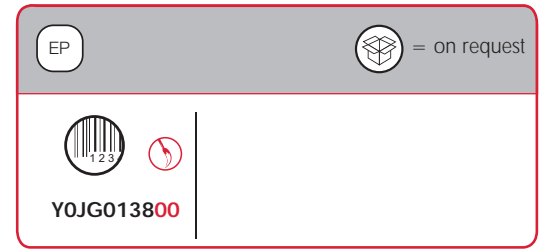
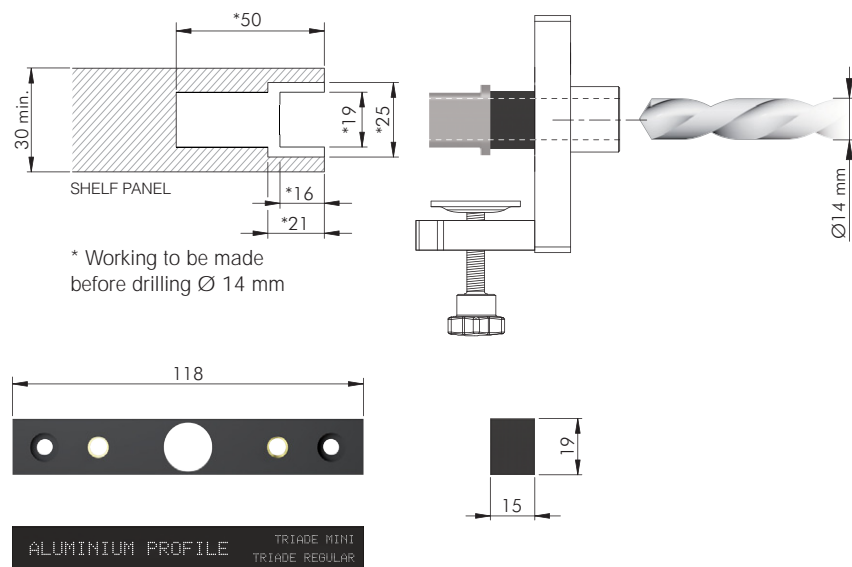
NOTE: The product code includes the fixing screws.



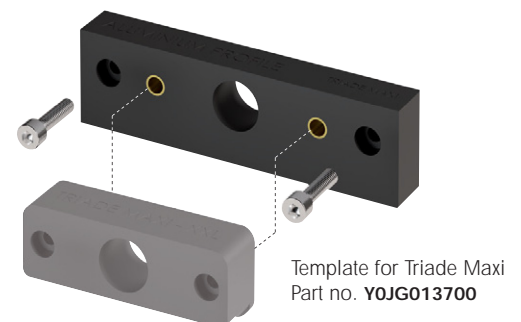
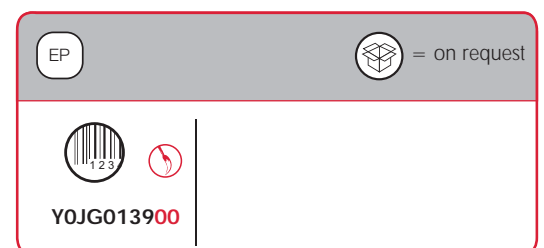
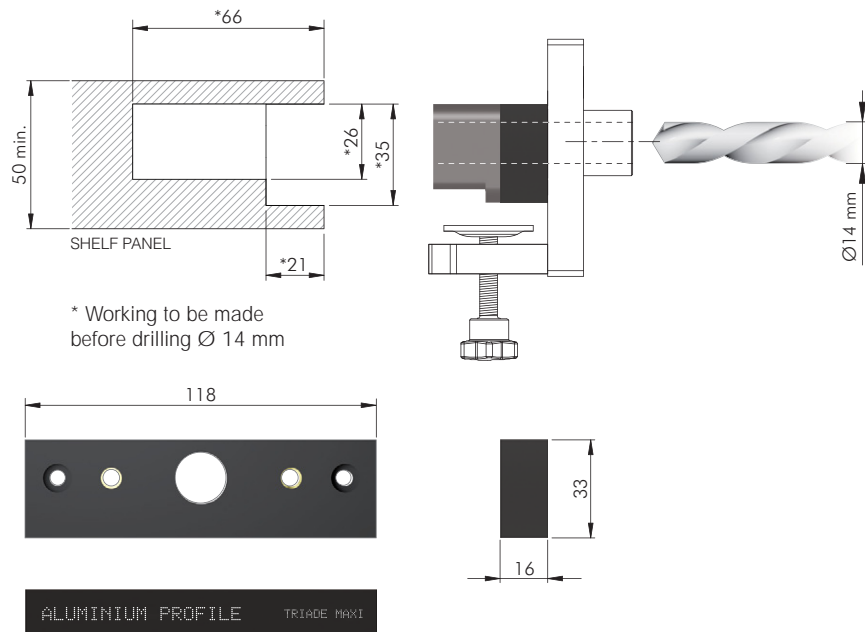
TRIADE MINI WITH ALU PROFILE DRILLING PLAN



TRIADE WITH ALU PROFILE DRILLING PLAN

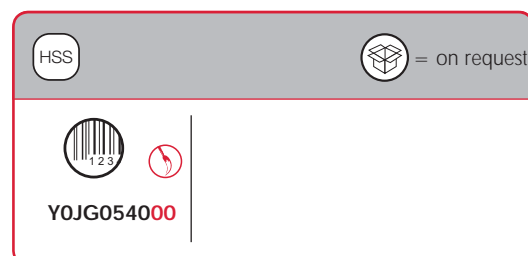
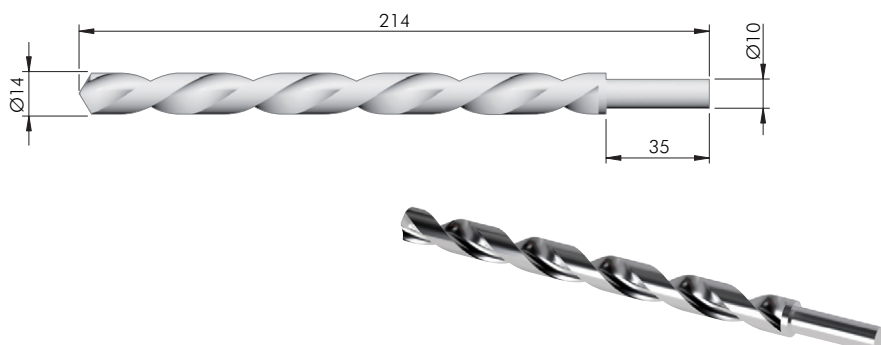


TRIADE MAXI DRILLING PLAN





DRILL BIT



NOTE: For drilling jig we recommend to use precision-ground steel drill bit HSS-G.

COMPLETE KIT DRILLING JIG FOR TRIADE

CONTENT OF THE CASE:

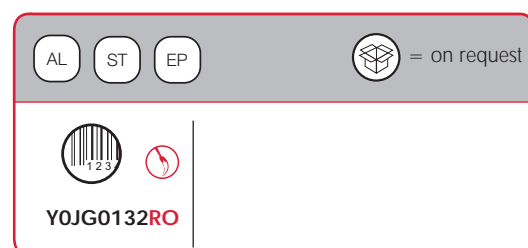
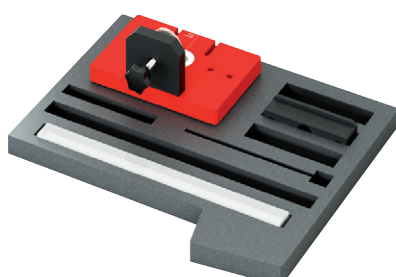
Part no.	Part no.
Y0JG0130RO	Y0JG0133RO
Y0JG013500	Y0JG054900
Y0JG013600	Y0JG055000
Y0JG013700	Y0JG054000
Y0JG013800	Y0JG054100
Y0JG013900	



BASE KIT DRILLING JIG TRIADE AND DRILL BIT (only template for Triade Regular)

CONTENT OF THE CASE:

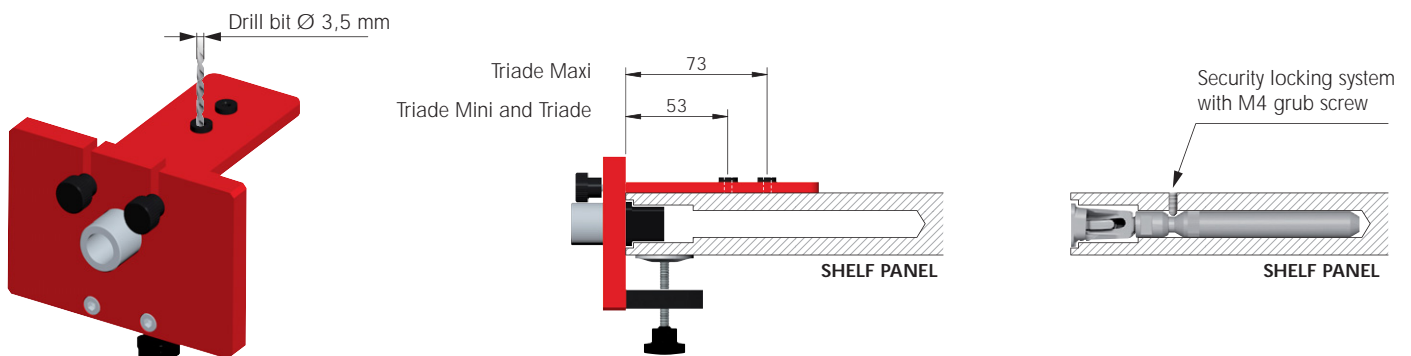
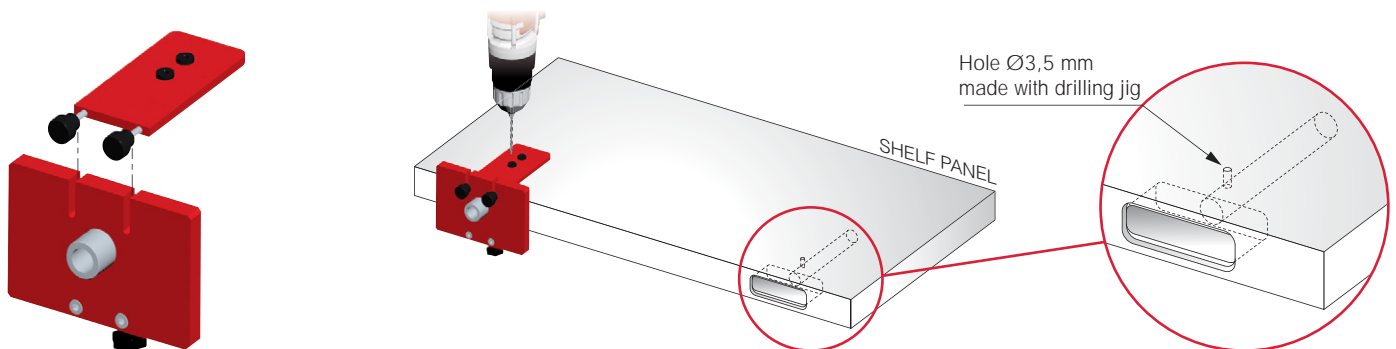
Part no.
Y0JG0130RO
Y0JG013600
Y0JG054000



TRIADE DRILLING JIG INSERT FOR SECURITY LOCKING



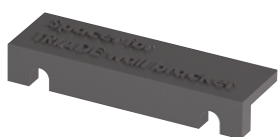
GENERAL SPECIFICATIONS



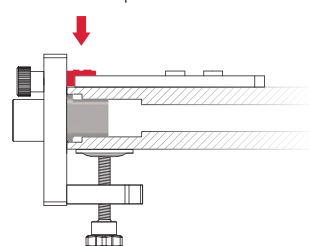
SPACERS AVAILABLE

SPACER FOR TRIADE WALL BRACKETS

Part no. Y0JG054900

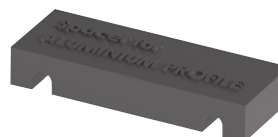


Spacer

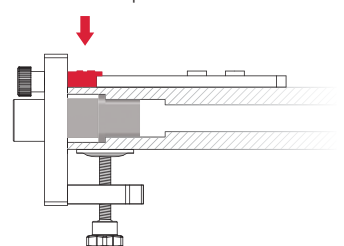


SPACER FOR TRIADE ALUMINIUM PROFILES

Part no. Y0JG055000



Spacer



Triade Mini
and bracket



Triade
and bracket



Triade Maxi
and bracket



Aluminium profile
for Triade Mini and Triade



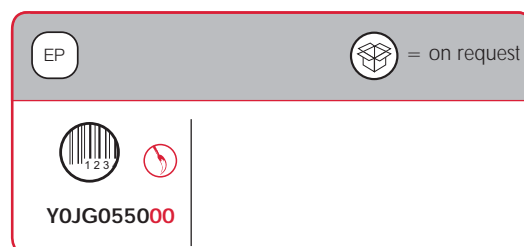
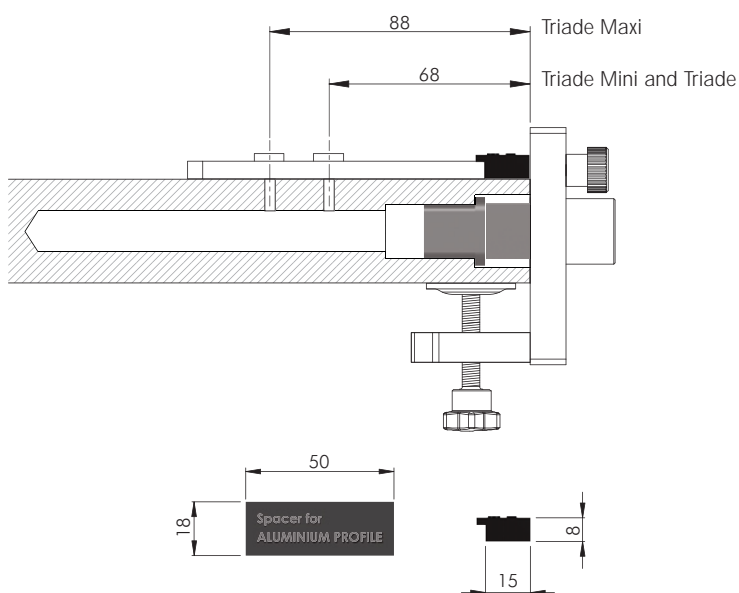
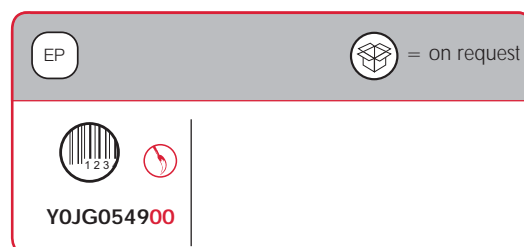
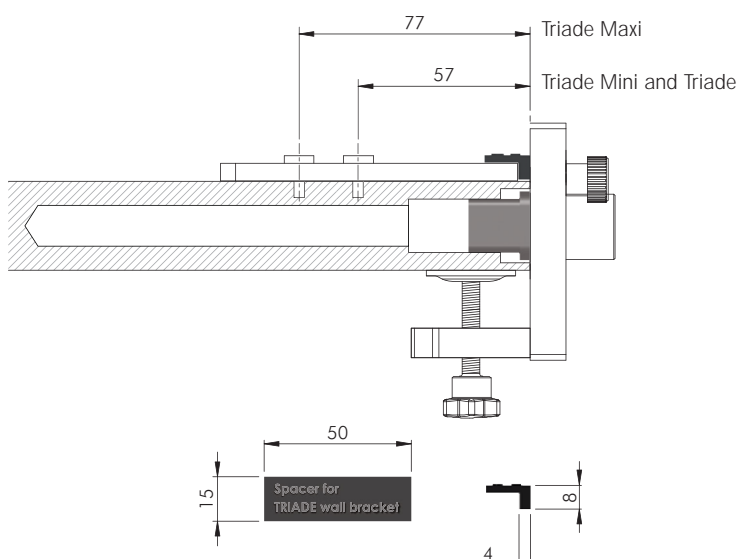
Aluminium profile
for Triade Maxi



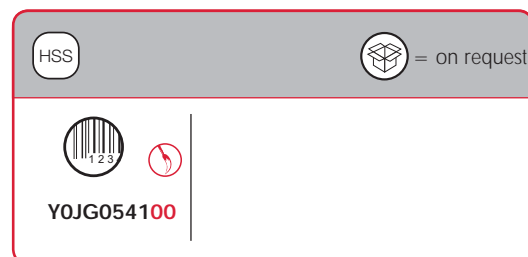
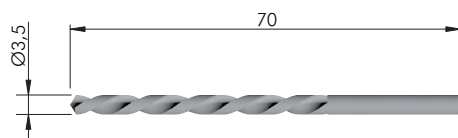
DRILLING JIG INSERT FOR SECURITY LOCKING



SPACERS FOR SECURITY LOCKING



DRILL BIT



NOTE: For drilling jig we recommend to use precision-ground steel drill bit HSS-G.

COMPLETE SET DRILLING JIG FOR TRIADE

CONTENT OF THE CASE:

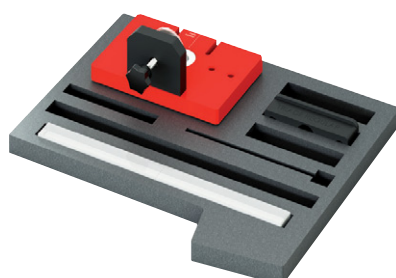
Part no.	Part no.
Y0JG0130RO	Y0JG0133RO
Y0JG013500	Y0JG054900
Y0JG013600	Y0JG055000
Y0JG013700	Y0JG054000
Y0JG013800	Y0JG054100
Y0JG013900	

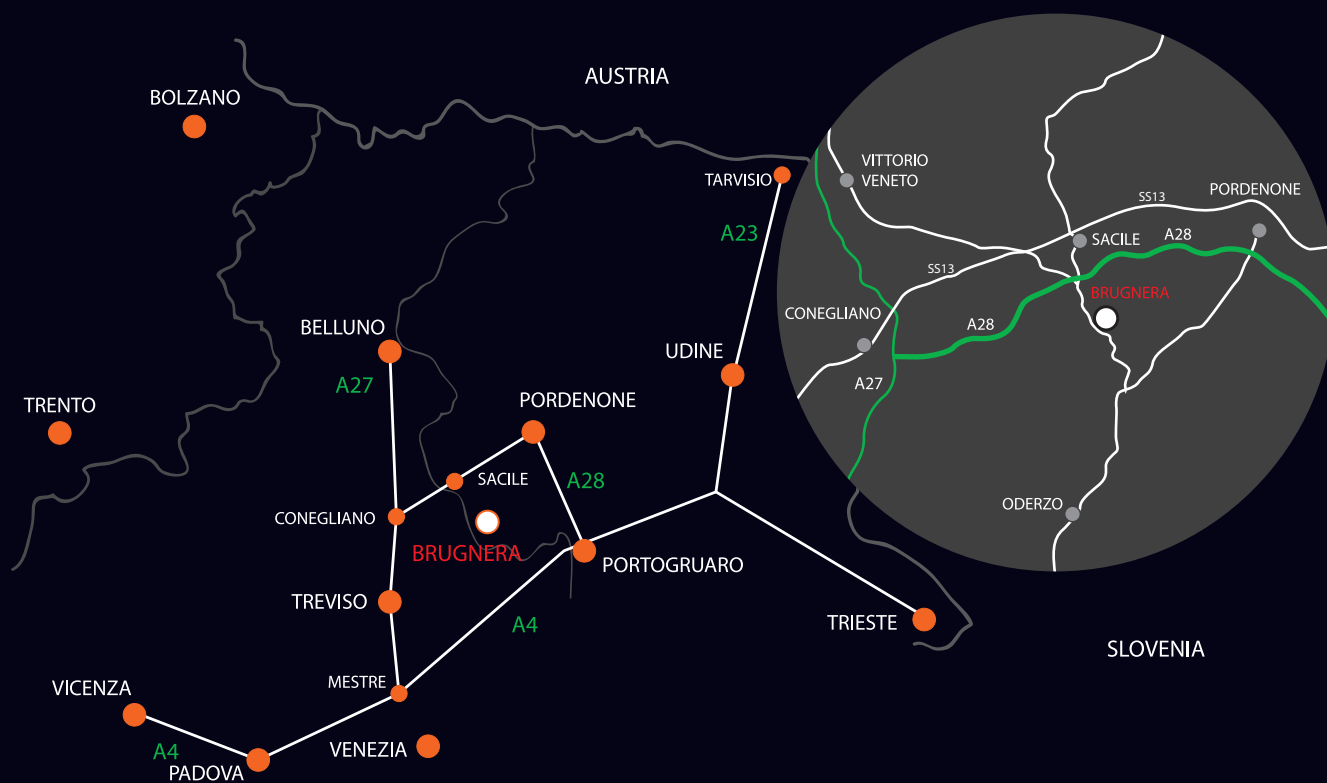


SET WITH DRILLING JIG TRIADE AND DRILL BIT Ø14 mm (only template for Triade Regular)

CONTENT OF THE CASE:

Part no.
Y0JG0130RO
Y0JG013600
Y0JG054000





www.italianaferramenta.com