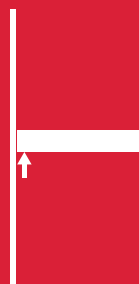


Triade Maxi

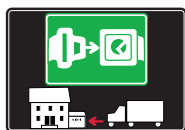


WOOD AND
GLASS
SHELVING
SYSTEMS



SYMBOLS AND FINISHES LEGEND

SYMBOLS



= SHELF SAFELY LOCKED DURING
TRANSPORTATION AND AT HOME.



= ANTI-TURNOVER LOCKING
SYSTEM



= NORMS / PATENTS



= PHILLIPS / POZIDRIV



= NEWTON



= PART.NO



= HEXAGONAL SOCKET



= FRICTION



= PCS. PER PACKAGE



= BLADE SLOT



= AUTOMATIC



= COMBI SLOT



= DROP DOWN



= CAPACITY LOADING



= COUNTERSUNK HEAD



= WOOD / GLASS THICKNESS



= PAN HEAD



= STANDARD HINGE



= HOLE DIAMETER



= FLANGE HEAD



= KIMANA HINGE



= DIAMETER



= FLAT HEAD



= FLAP HINGE



= LENGTH



= TRILOBULAR SCREW



= WITH SPRING



= HEIGHT



= SELF-TAPPING SCREW



= WITHOUT SPRING



= RIGHT VERSION



= EURO THREAD



= REVERSED SPRING



= LEFT VERSION



= METRIC THREAD



= SETTING CODE



= PRE-INSERTED SCREW



= FOR ROUND TUBE



= PCS. PER PAD



= PRE-INSERTED SCREW
AND SPREADING BUSH



= FOR OVAL TUBE



= CUT ON REQUEST



= WITH BUFFER



= SELF ADHESIVE



= WITH MAGNET



= WITH FLANGE

NOTE: Printing errors and omissions may exist despite our best efforts to ensure accuracy. We reserve the right to alter specifications without notice.

MATERIALS

ZA = Zinc Alloy	ST = Steel	HSS = High Speed Steel	BR = Brass	ABS = Acrylonitrile Butadiene Styrene
ZAnk = Nickel-plated Zinc Alloy	STzk = Zinc-plated Steel	AL = Aluminium	WD = Wood	EVA = Ethylene Vinyl Acetate

EP = **ENGINEERING PLASTIC**

+ EP = other engineering plastic available on request

SR = **SOFT RUBBER**

+ SR = other soft rubber available on request

EPn = Natural Engineering Plastic	EPc = Clear Engineering Plastic	SRn = Natural Soft Rubber
EPw = White Engineering Plastic	EPg = Grey Engineering Plastic	SRw = White Soft Rubber
EPwg = Water Green Engineering Plastic		SRb = Black Soft Rubber



FINISHES



= OTHER FINISHES AVAILABLE ON REQUEST

PART. NO	FINISHES	PART. NO	FINISHES	PART. NO	FINISHES
AA	Natural	JB	Bright Aluminium	RO	Red
AB	White	JC	Aluminium - Chrome	UZ	T -Met
AC	Opal White	JD	Matt Aluminium	WA	Bronzed
AE	White 9010	JE	Satin-finished Aluminium	WI	Burnished
AK	Champagne	JF	Aluminium - Brass	XD	Satin-finished Steel
AL	Ivory	JG	Aluminium 5	YA	Nickel-plated
EA	Black	JL	Aluminium PE 11	YB	Bright Nickel-plated
EB	Glossy Black	JM	Aluminium RAL 9006	YC	Matt Nickel-plated
EC	Matt Black	KA	Chrome	YD	Satin-finished Nickel-plated
EE	Anthracite	KB	Bright Chrome	YQ	Black Nickel
FU	Gunmetal	KC	Matt Chrome	ZA	Zinc alloy
GR	Raw	MA	Brown	ZN	Zinc-plated
HA	Brass-Plated	MB	Light Brown 1	ZQ	Bright Gold
HH	Tropicalized	NN	Metallic Beige	ZY	Titanium
HL	Raw Brass	NO	Beige	ZZ	Clear
HX	Graphite	OA	Oak	00	Insignificant finish
IA	Grey	OZ	Ash		
IB	Metallic Grey	PA	Light Ash		
IF	Middle Grey	PZ	Beech		
IJ	Light Grey	QB	Walnut		

TRIADE MAXI

TRIADE MAXI is the concealed mounting bracket for shelves minimum 40mm thick. It has been conceived to simplify the shelf installation. It is provided with three independent adjustments:

1) VERTICAL

Before installing the shelf, the mounting brackets can be adjusted in height and (vertically) aligned through the slots.

2) HORIZONTAL

While placing the shelf in position, the supporting pins can be slid horizontally.

3) INCLINATION

When the shelf is partially inserted, the shelf angle can be adjusted front to back by turning the supporting pins with a 12mm open-ended wrench.

The capacity loading is 20Kg each (shelf weight included) for a shelf max 400mm deep.

Shelf minimum depth: 200mm.

Zinc alloy and steel

40 mm min.



20 kg for each shelf support
for shelf 400 mm deep

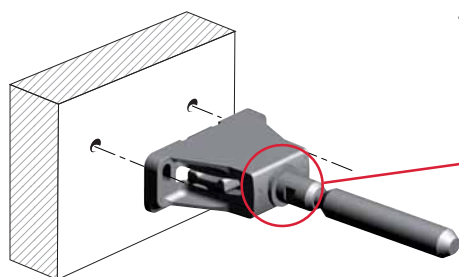


PAT. PENDING



INSTALLATION AND ADJUSTMENTS

WOOD PANEL



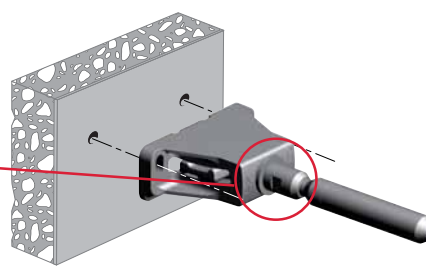
Recommended fixing pan head screw type - head Ø 5 mm max.

VERY IMPORTANT

Triade Maxi has to be installed with the arrow facing upwards.



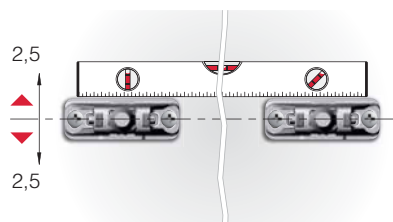
SOLID AND PLASTERBOARD PANEL



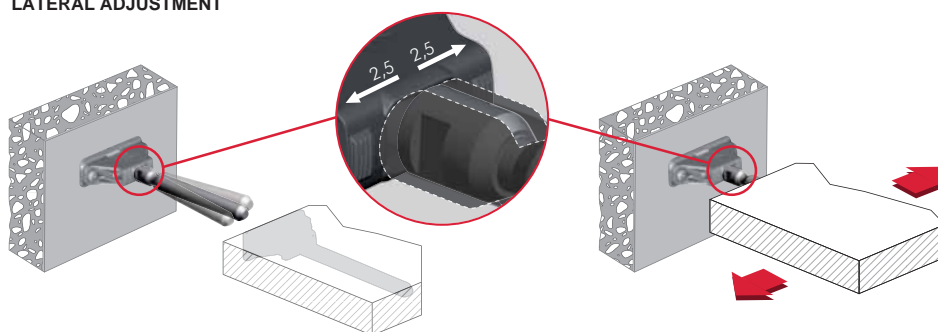
It is the responsibility of the customer:

- to ensure the wall is of a suitable quality to hold the shelf fixing in place.
 - to use the proper hardware fittings according to the construction of the wall.
- For more specific information, please refer to the WARNINGS section at the end of the catalogue.

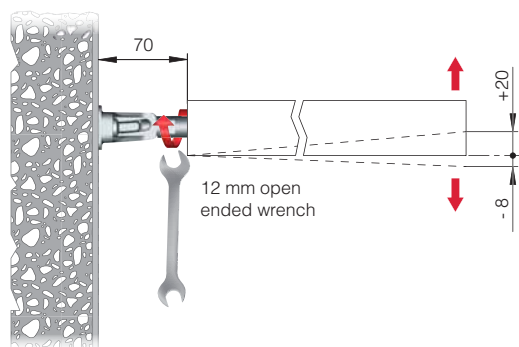
BRACKET ALIGNMENT



LATERAL ADJUSTMENT

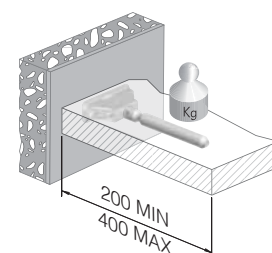
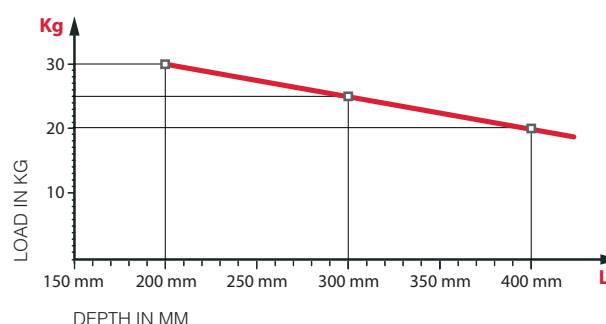


INCLINATION ADJUSTMENT



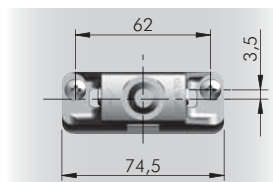
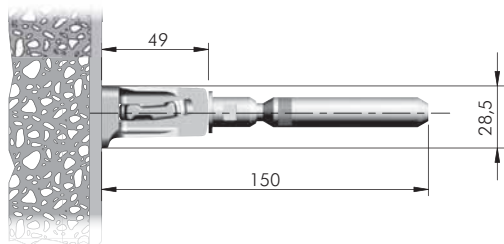
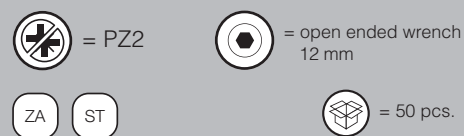
COMBINATION SHELF LOAD AND SHELF DEPTH

(The figures refer to 1 shelf support)

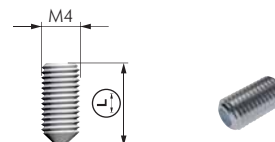
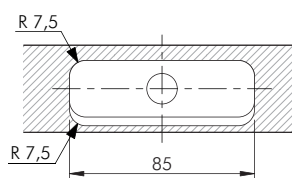
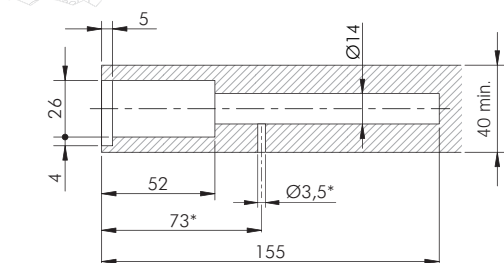


+ shelf weight = 20 kg MAX
for each shelf support

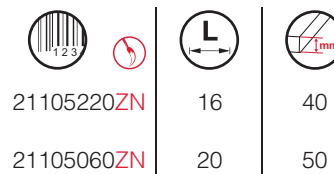
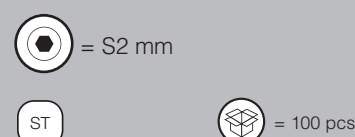
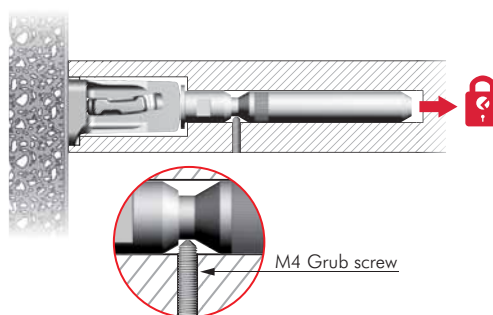
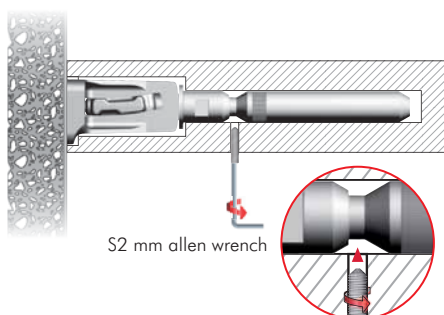
For installation details refer to "APPLICATION FOR ALL TRIADE VERSIONS"



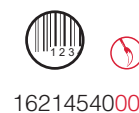
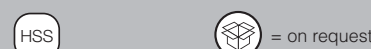
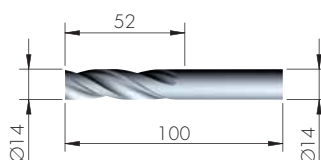
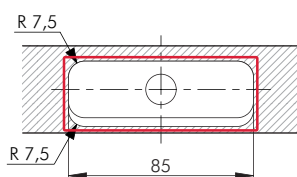
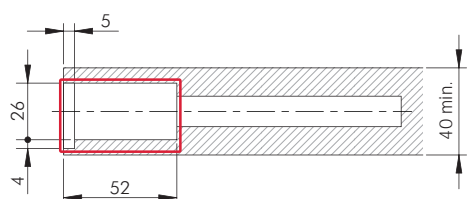
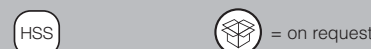
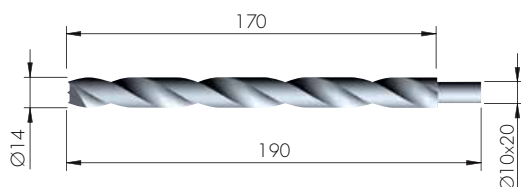
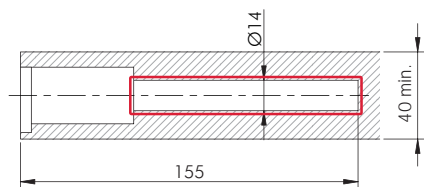
VERY IMPORTANT
Centre of the hole is shifted 3,5 mm upwards. Please keep in mind when levelling the shelf.



* Optional drilling for security locking with M4 grub screw placed underneath in alignment with the cavity.



DRILL BIT FOR TRIADE MAXI



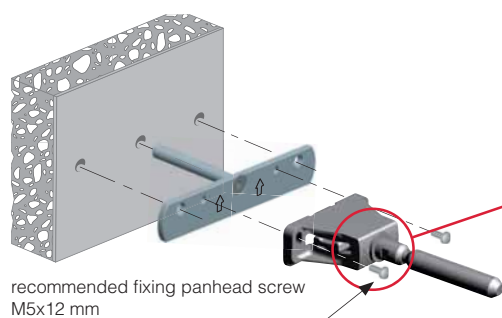
TRIADE MAXI AND BRACKET



OPTIONAL SECURITY LOCKING

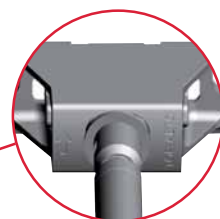
INSTALLATION

SOLID AND PLASTERBOARD PANEL



VERY IMPORTANT

Triade Maxi has to be installed with the arrow facing upwards.



It is the responsibility of the customer:

- to ensure the wall is of a suitable quality to hold the shelf fixing in place.
- to use the proper hardware fittings according to the construction of the wall.

For more specific information, please refer to the WARNINGS section at the end of the catalogue.



= PZ2 = open ended wrench 12 mm

ZA

ST

= 50 pcs.



1621601000

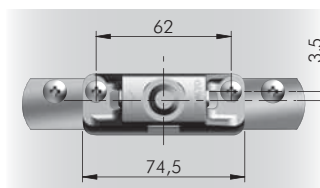
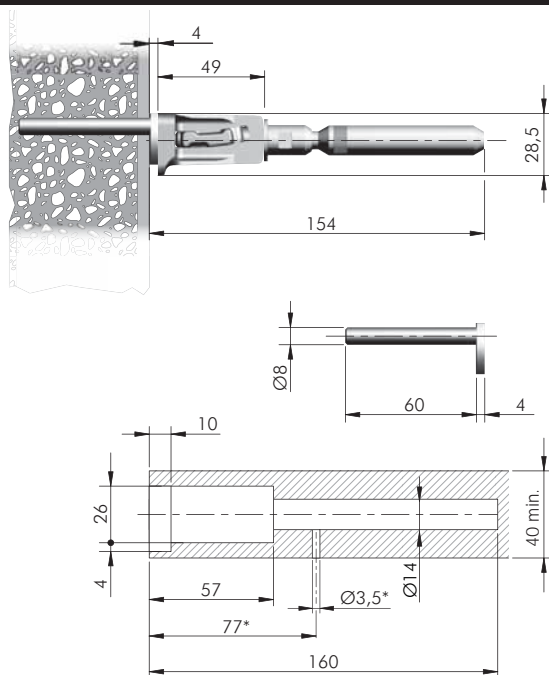
= M5

ST

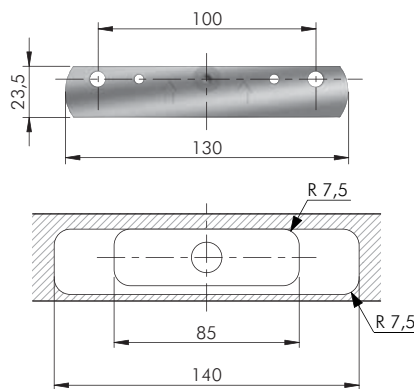
= 100 pcs.



16215030ZN

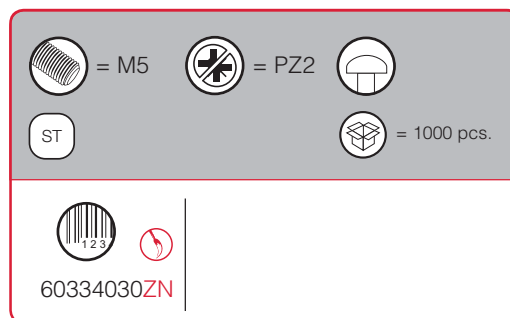


VERY IMPORTANT
Centre of the hole is shifted 3,5 mm upwards. Please keep in mind when levelling the shelf.

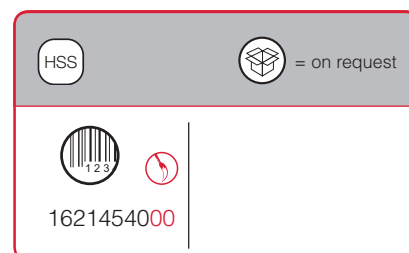
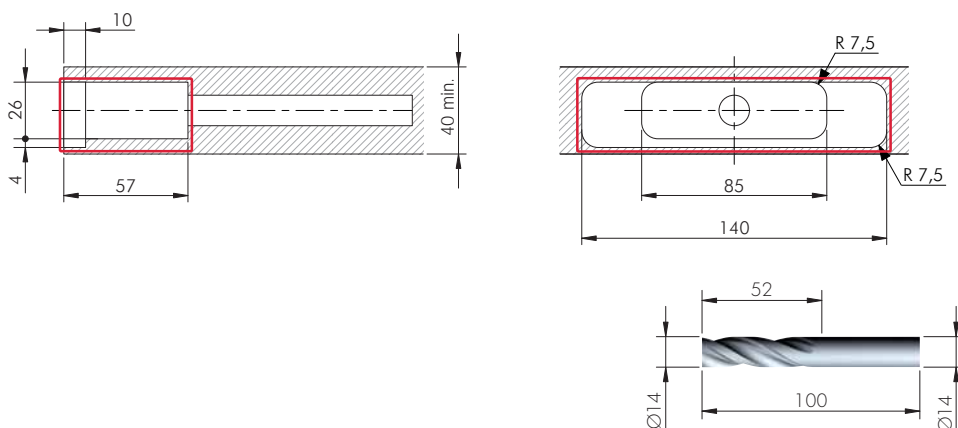
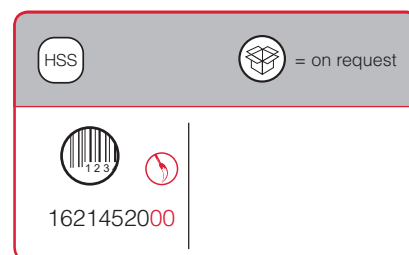
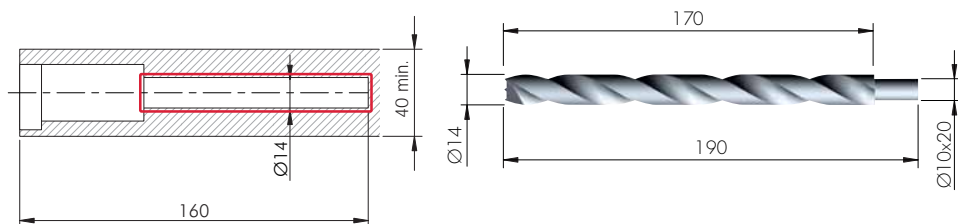


* Optional drilling for security locking with M4 grub screw placed underneath in alignment with the cavity. For details refer to Triade Maxi section.

TRIADE MAXI BRACKET FIXING ACCESSORY



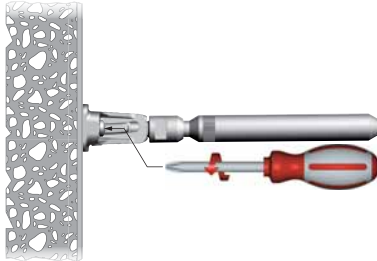
DRILL BIT FOR TRIADE MAXI AND BRACKET



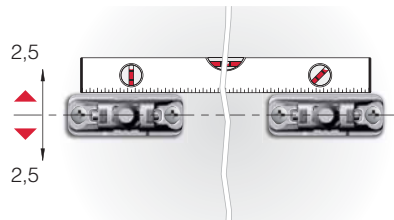
APPLICATION FOR ALL TRIADE VERSIONS

VERTICAL ADJUSTMENTS

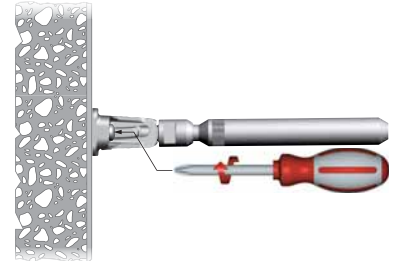
RELEASE THE FIXING SCREWS



ALIGN BRACKETS VERTICALLY ACCORDINGLY

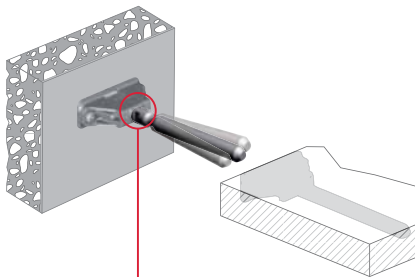


TIGHT THE FIXING SCREWS

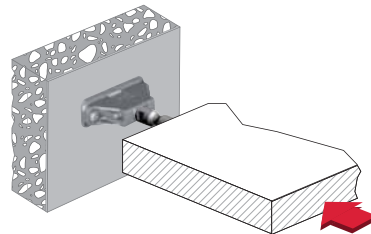


SHELF INSERTING AND LATERAL ADJUSTMENT

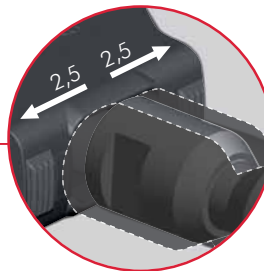
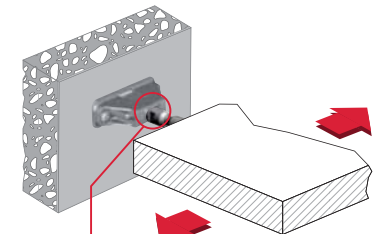
TILT THE SHELF TO MATCH BOTH SUPPORTING
PINS AND SHELF HOUSINGS



INSERT PARTIALLY THE SHELF

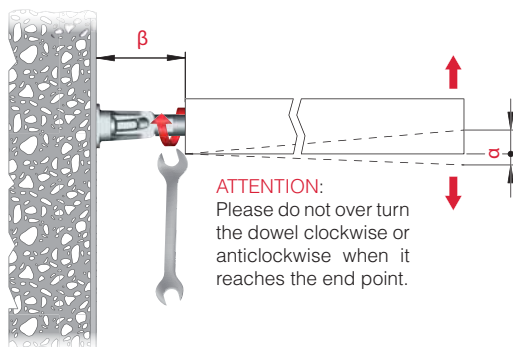


ADJUST THE SHELF LATERALLY ACCORDING TO
THE APPLICATION (i.e. MULTI-SHELF COMPOSITION)



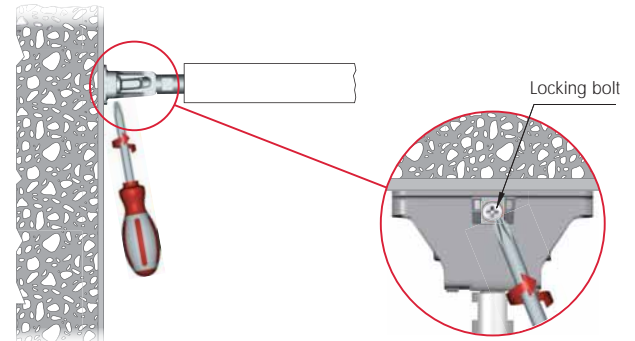
INCLINATION ADJUSTMENTS

TURN CLOCKWISE THE SUPPORTING PIN WITH A 10 - 12 mm OPEN-ENDED
WRENCH TO ADJUST THE SHELF ANGLE FRONT TO BACK ACCORDINGLY



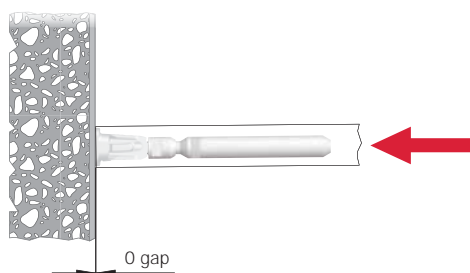
MODEL	β (mm)	α (mm)
TRIADE MINI	approx. 45	-6 +13
TRIADE	approx. 45	-6 +13
TRIADE MAXI	approx. 70	-8 +20
TRIADE XXL	approx. 70	-8 +20

SCREW THE LOCKING BOLT TO BLOCK THE PIN



SHELF INSERTING FOR ALL TRIADE MODELS

PUSH THE SHELF AGAINST THE WALL UNTIL THE END





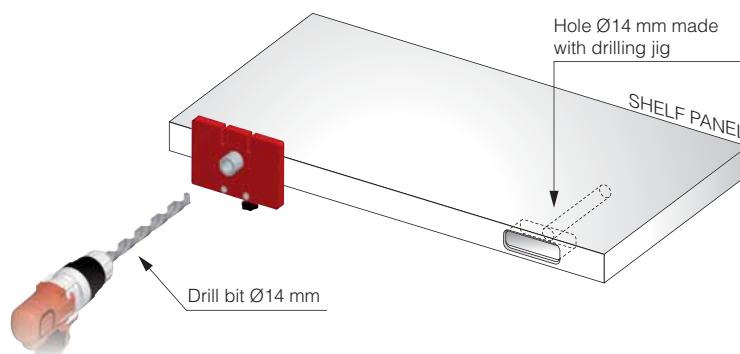
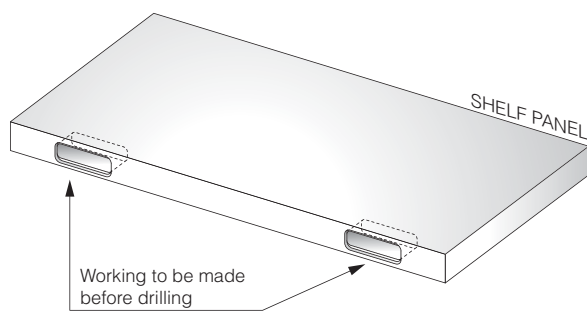
DRILLING JIG FOR TRIADE



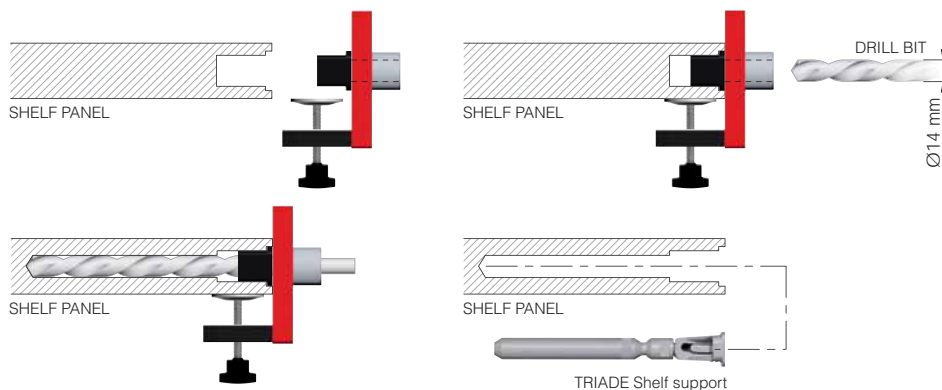
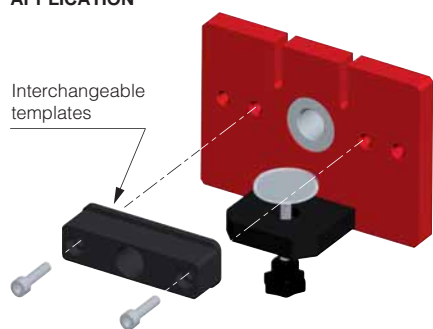
50 mm MAX



GENERAL SPECIFICATIONS



APPLICATION



TEMPLATES AVAILABLE

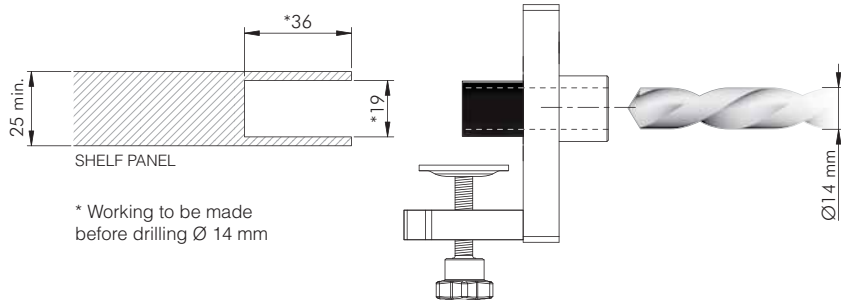
TEMPLATE FOR TRIADE MINI Part no. Y0JG013500	TEMPLATE FOR TRIADE Part no. Y0JG013600	TEMPLATE FOR TRIADE MAXI Part no. Y0JG013700	TEMPLATE FOR TRIADE MINI AND TRIADE ALUMINIUM PROFILE Part no. Y0JG013800	TEMPLATE FOR TRIADE MAXI ALUMINIUM PROFILE Part no. Y0JG013900
Triade Mini 	Triade 	Triade Maxi 	Aluminium profile for Triade Mini and Triade 	Aluminium profile for Triade Maxi
			Triade Mini 	Triade Maxi

TRIADE DRILLING JIG

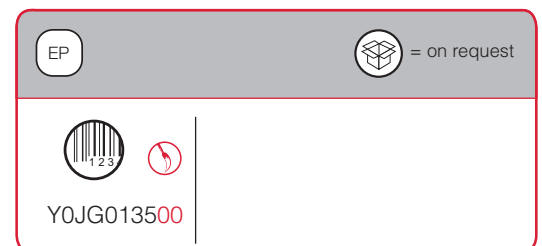
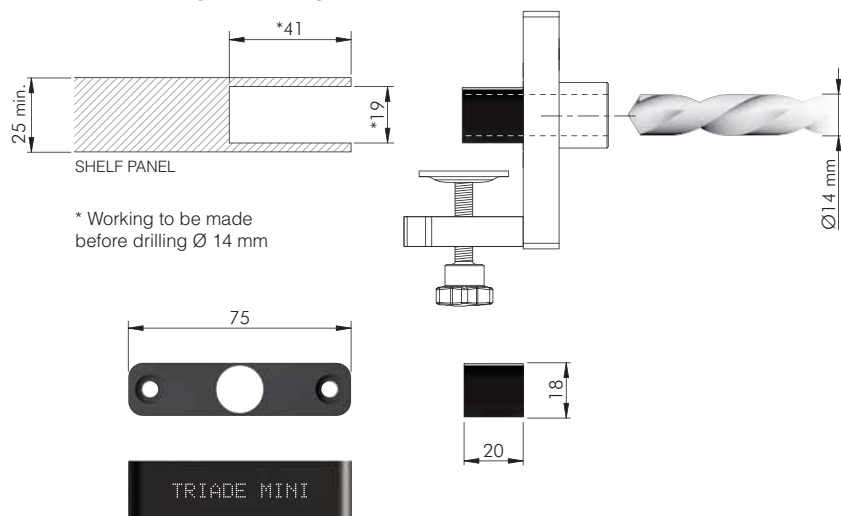


TRIADE DRILLING JIG TEMPLATES

TRIADE MINI DRILLING PLAN



TRIADE MINI AND BRACKET DRILLING PLAN

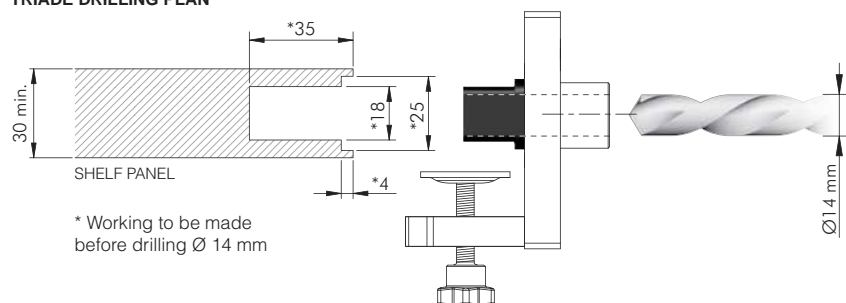


NOTE: The product code includes the fixing screws.

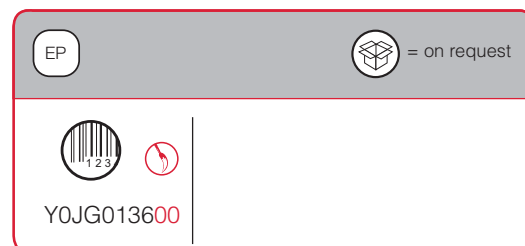
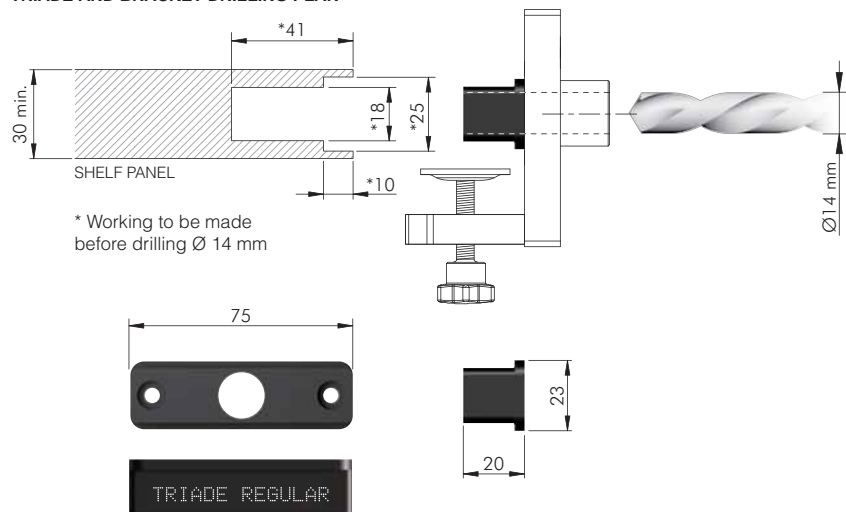




TRIADE DRILLING PLAN



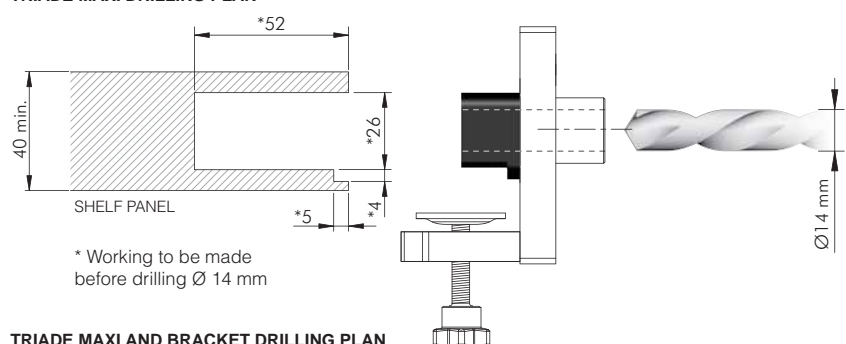
TRIADE AND BRACKET DRILLING PLAN



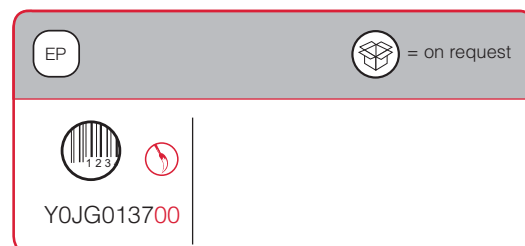
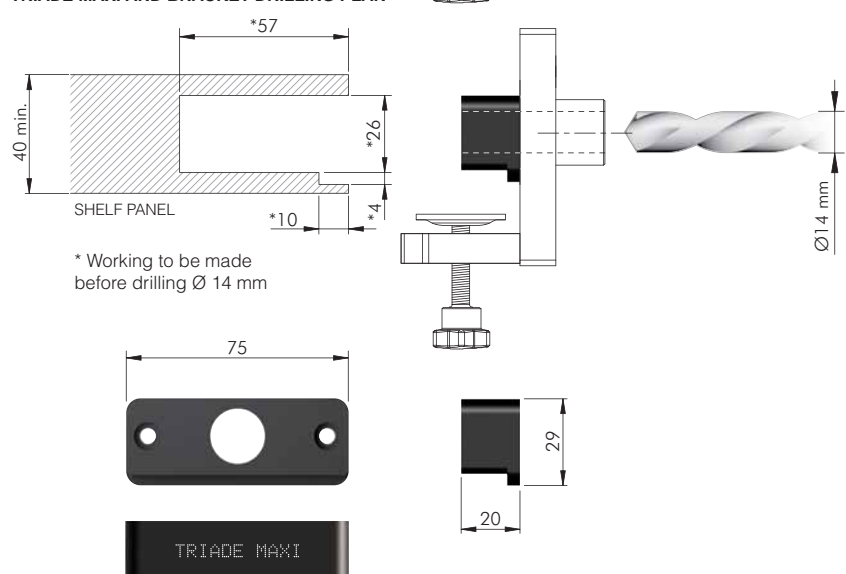
NOTE: The product code includes the fixing screws.



TRIADE MAXI DRILLING PLAN



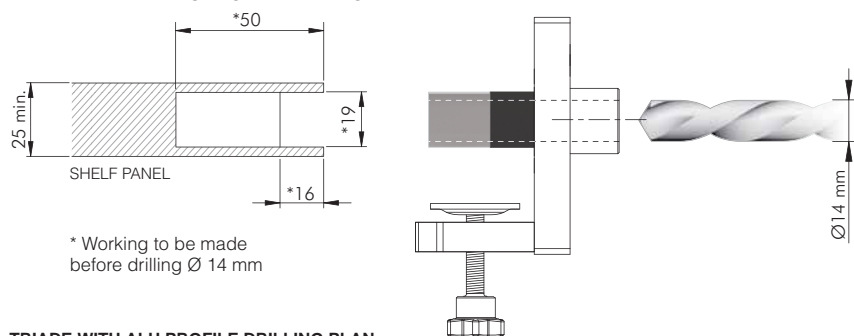
TRIADE MAXI AND BRACKET DRILLING PLAN



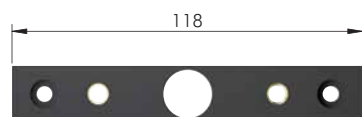
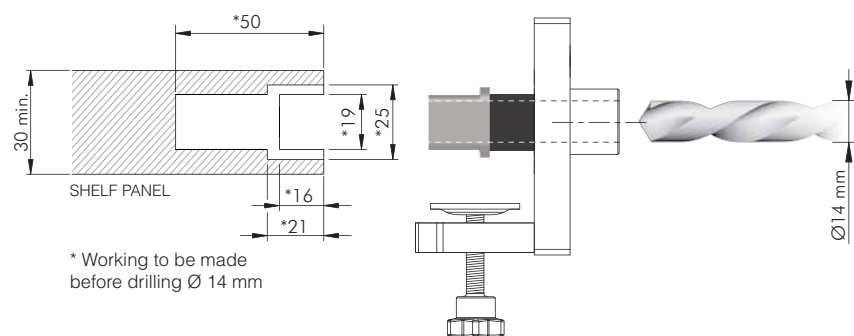
NOTE: The product code includes the fixing screws.



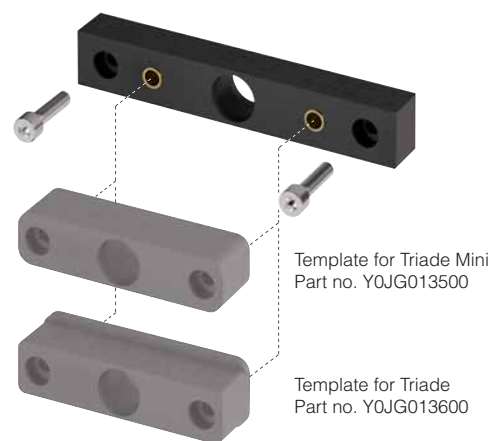
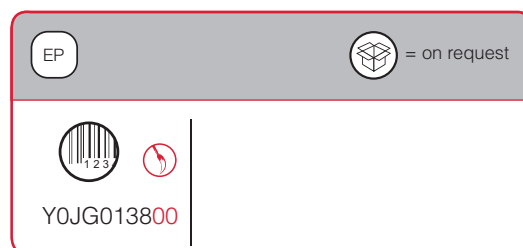
TRIADE MINI WITH ALU PROFILE DRILLING PLAN



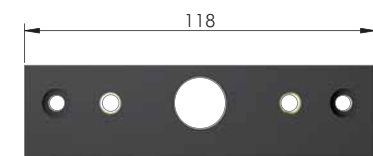
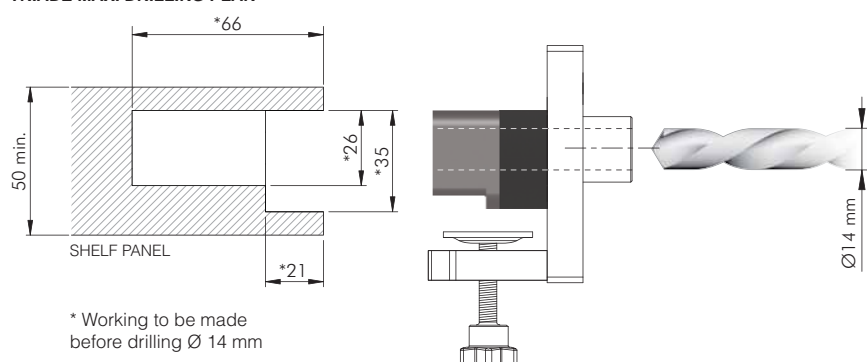
TRIADE WITH ALU PROFILE DRILLING PLAN



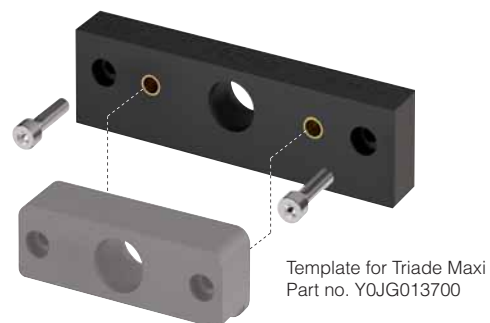
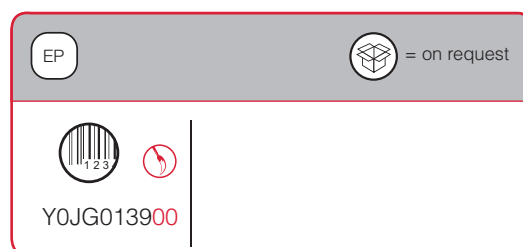
ALUMINIUM PROFILE TRIADE MINI
TRIARE REGULAR



TRIADE MAXI DRILLING PLAN

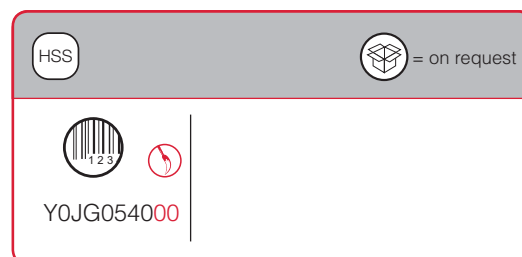
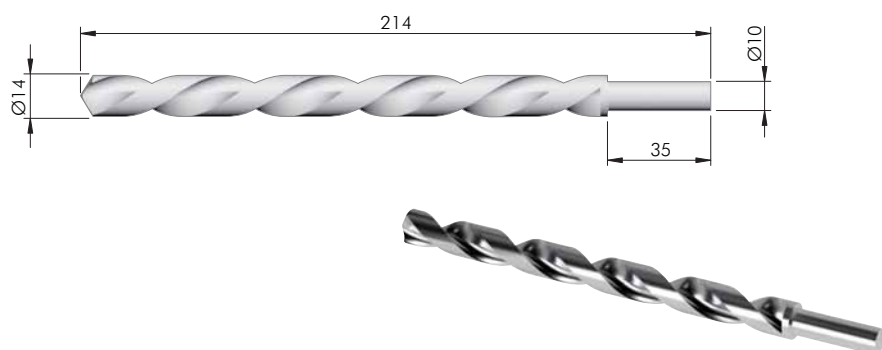


ALUMINIUM PROFILE TRIARE MAXI





DRILL BIT

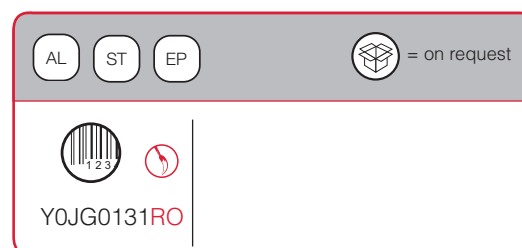


NOTE: For drilling jig we recommend to use precision-ground steel drill bit HSS-G.

COMPLETE KIT DRILLING JIG FOR TRIADE

CONTENT OF THE CASE:

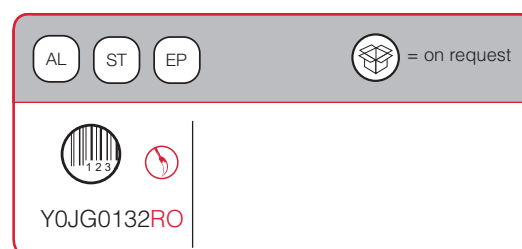
Part no.	Part no.
Y0JG0130RO	Y0JG0133RO
Y0JG0135RO	Y0JG054900
Y0JG0136RO	Y0JG055000
Y0JG0137RO	Y0JG054000
Y0JG0138RO	Y0JG054100
Y0JG0139RO	



BASE KIT DRILLING JIG TRIADE AND DRILL BIT (only template for Triade Regular)

CONTENT OF THE CASE:

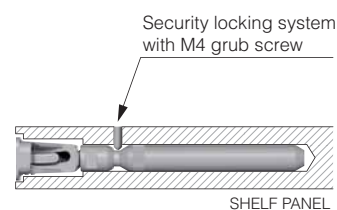
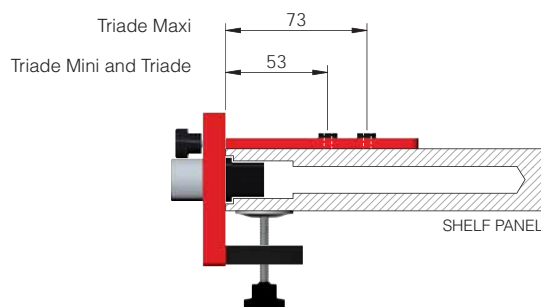
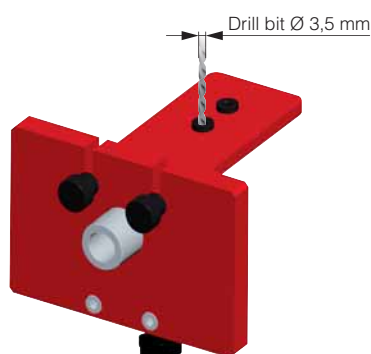
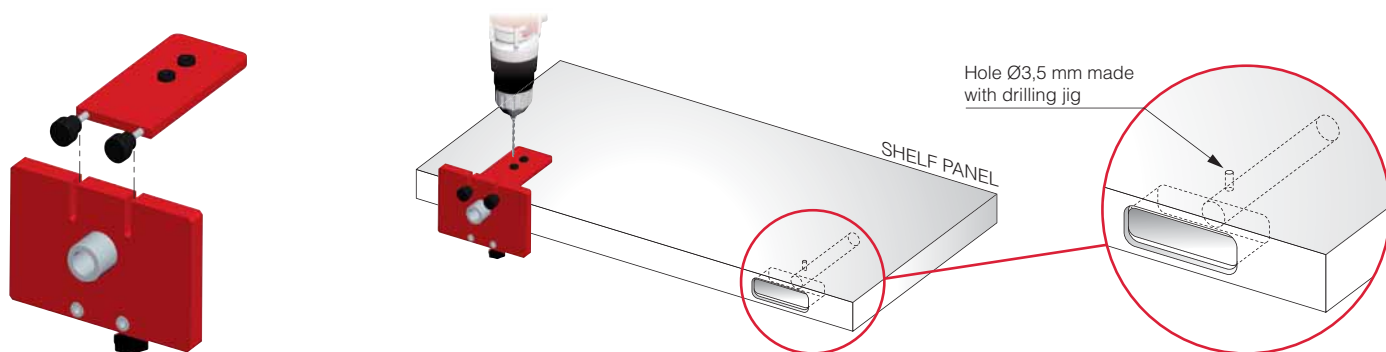
Part no.
Y0JG0130RO
Y0JG0136RO
Y0JG054000



TRIADE DRILLING JIG INSERT FOR SECURITY LOCKING



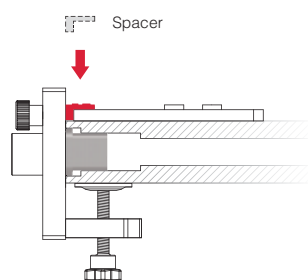
GENERAL SPECIFICATIONS



SPACERS AVAILABLE

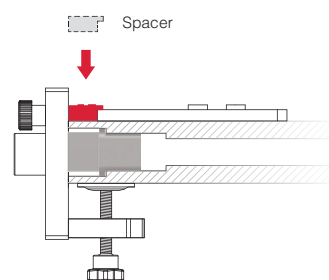
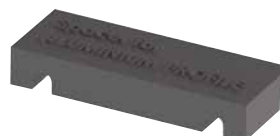
SPACER FOR TRIADE WALL BRACKETS

Part no. Y0JG054900



SPACER FOR TRIADE ALUMINIUM PROFILES

Part no. Y0JG055000

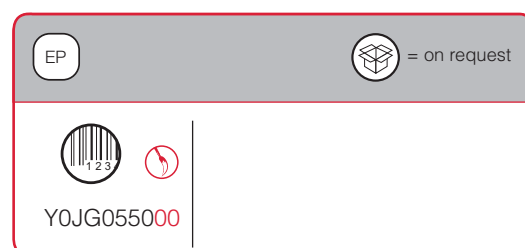
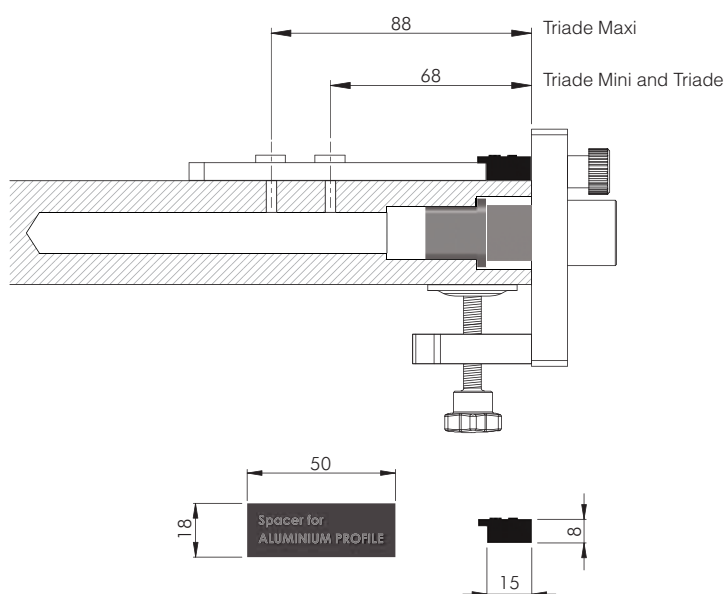
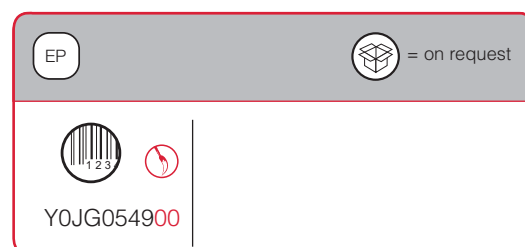
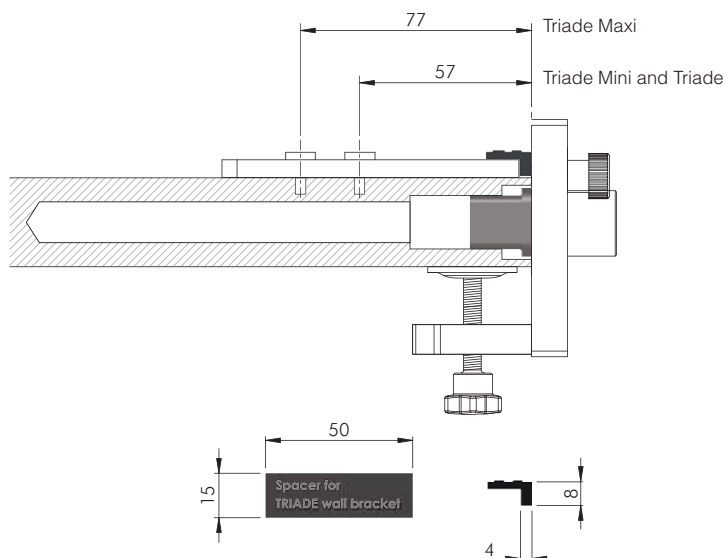




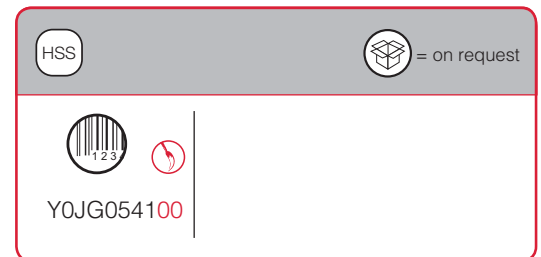
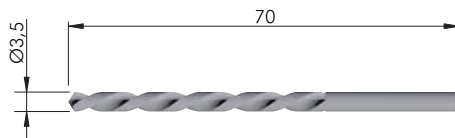
DRILLING JIG INSERT FOR SECURITY LOCKING



SPACERS FOR SECURITY LOCKING



DRILL BIT



NOTE: For drilling jig we recommend to use precision-ground steel drill bit HSS-G.

COMPLETE SET DRILLING JIG FOR TRIADE

CONTENT OF THE CASE:

Part no.	Part no.
Y0JG0130RO	Y0JG0133RO
Y0JG0135RO	Y0JG054900
Y0JG0136RO	Y0JG055000
Y0JG0137RO	Y0JG054000
Y0JG0138RO	Y0JG054100
Y0JG0139RO	



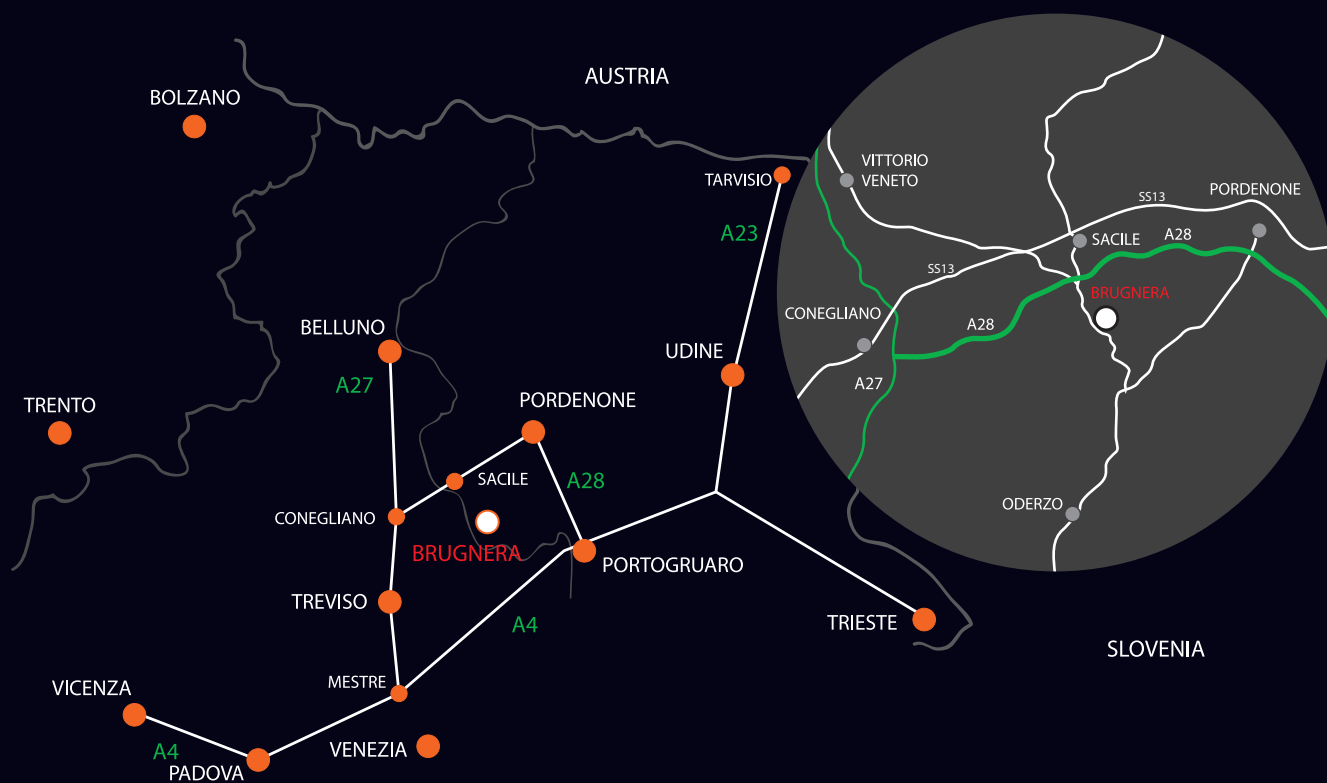
SET WITH DRILLING JIG TRIADE AND DRILL BIT Ø14 mm (only template for Triade Regular)

CONTENT OF THE CASE:

Part no.
Y0JG0130RO
Y0JG0136RO
Y0JG054000







www.italianaferramenta.com